

Health and Safety Policy

Mission Statement

West holds a deep-seated belief in education and lifelong learning. Effective collaboration, mutual support and professional challenge will underpin our quest to ensure that all the children and adults we serve are given every opportunity to fulfil their potential and succeed in life.

Person(s) responsible for updating the policy:	Director of Estates
Version updated by:	Mark Bullard
Date Approved:	July 2024
Date of Review:	July 2025
Status:	Statutory

WeST Core Values

WeST holds four core values which underpin the engagement, motivation and retention of employees, no matter what their role in the organisation.

- **Collaboration**
Creating a shared vision and working effectively across boundaries in an equitable and inclusive way to skilfully influence and engage others. Building and securing value from relationships, developing self and others to achieve positive outcomes.
- **Aspiration**
Having high expectations, modelling the delivery of high-quality outcomes. Showing passion, persistence and resilience in seeking creative solutions to strive for continuous improvement and excellence.
- **Integrity**
Acting always with the interests of children and young people at our heart, and with a consistent and uncompromising adherence to strong moral and ethical principles. Communicating with transparency and respect, creating a working environment based on trust and honesty.
- **Compassion**
Recognising need in others and acting with positive intention to promote well-being and improve outcomes.

Providing Accessible Formats

If you are unable to use this document and require it in a different format, please contact admin@westst.org.uk .

Changes for Academic Year 2024/25

HR Committee and Estates Committee replaced by Audit and Risk Committee and Finance Committee throughout the document

Pages 18 - 19

34.0 Medication Arrangements

- 34.1 In line with DfE guidance there may be occasions when schools administer medication (and on occasions this could be both prescription medication and non-prescription) with the consent of the parents/carers.
- 34.2 Unauthorised medication (undeclared to teaching staff and therefore without parental consent) is not allowed in any school. All authorised medication is to be kept securely in a locked cupboard in the Medical Room.
- 34.3 Care plans should be signed by parents/carers for all medication that the Headteacher/Principal or Designated Lead of the school has agreed to be administered within school time.
- 34.4 Trained staff administer medication in line with the child's care plan, the time, amount and any reactions are recorded on the child's Medication Record Sheet.
- 34.5 Each school within WeST is required to produce its own medication policy which must reflect the population need.

Contents

Mission Statement.....	1
Changes for Academic Year 2024/25.....	2
1 STATEMENT OF INTENT	7
2 The Duties of the Trust Board	8
3 The Duties of the Finance Committee, Audit and Risk Committees.....	9
4 The Duties of the CEO.....	9
5 The Duties of the Estate Director.	9
6 The Duties of the Principal/Head Teacher.....	10
7 The Duties of the Health and Safety Environment Manager.....	11
8 The Duties of Heads of Departments/Supervisory Staff/Subject Leaders.....	11
9 The Duties of all Members of Staff.....	12
10 Students.....	13
11 Contractors	13
12 Arrangements.....	13
13 Risk Assessment	14
14 Accident/Incident Reporting.....	15
15 Asbestos.....	15
16 Communication and Training.....	16
17 Consultation.....	16
18 Construction Design Management. (CDM).....	16
19 Contractors	17
20 Curriculum Activities.....	18
21 Display Screen Equipment (DSE).....	18
22 Driver Handbook.....	18
23 Electricity at Work.....	18
24 Fire Safety.....	19
25 First Aid	20
26 Gas Safety	20
27 Hazardous Substances	20
28 Health and Safety Induction.....	21
29 Health and Safety Inspections	21
30 Legionella	21

31	Lettings/shared use of premises.....	22
32	Lone Working.....	22
33	Maintenance of Plant and Equipment.....	22
34	Medication Arrangements	23
35	Monitoring.....	23
36	Moving and Handling.....	24
37	Noise at Work	24
38	Off-site Visits.....	24
39	Personal Protective Equipment (PPE)	24
40	Personal Safety and Security.....	25
41	Radon Gas.....	25
42	Radioactive Sources (where relevant)	26
43	Stress/Wellbeing	26
44	Tree Safety Management.....	26
45	Vehicle Movement around Site.	26
46	Work at Height	27
47	Work Experience	27
48	Workplace safety	28

Health and Safety in each School

This policy sets out the overall Trust commitment to Health and Safety in all Schools and establishments. The Principal/Headteacher for each school is required to amend Appendix 1 of this policy to reflect specific Health and Safety requirements for their school.

Health and Safety Providers

The below table details the Health and Safety provider for each school in the MAT. For any Health and Safety matter please contact the WeST Health Safety and Environment Manager or the correct Health and Safety provider

School	Health and Safety Provider
Ashburton School	Devon Health and Safety Service, Devon County Council – OSHENS
Atrium School	Devon Health and Safety Service, Devon County Council – OSHENS
Austin Farm School	Devon Health and Safety Service, Devon County Council – OSHENS
Borrington School	Devon Health and Safety Service, Devon County Council – OSHENS
Buckfastleigh School	Devon Health and Safety Service, Devon County Council – OSHENS
Callington School	Devon Health and Safety Service, Devon County Council – OSHENS
Camelford School	Cornwall County Council Safety Service until Sept 2024 Then DCC
Chaddlewood School	Devon Health and Safety Service, Devon County Council – OSHENS
Coombe Dean School	Devon Health and Safety Service, Devon County Council – OSHENS
Eggbuckland CC	Devon Health and Safety Service, Devon County Council – OSHENS
Ermington School	Devon Health and Safety Service, Devon County Council – OSHENS
Glen Park School	Devon Health and Safety Service, Devon County Council – OSHENS
Hele's School	Devon Health and Safety Service, Devon County Council – OSHENS
Holbeton Primary School	Devon Health and Safety Service, Devon County Council – OSHENS
Ivybridge Community College	Devon Health and Safety Service, Devon County Council – OSHENS

Manor School	Devon Health and Safety Service, Devon County Council – OSHENS
Morley Meadow Primary School	Devon Health and Safety Service, Devon County Council – OSHENS
Oreston Community Academy	Devon Health and Safety Service, Devon County Council – OSHENS
Otterham School	Cornwall County Council Safety Service until Sept 2024 Then DCC
Plympton St Maurice	Devon Health and Safety Service, Devon County Council – OSHENS
Plymstock School	Devon Health and Safety Service, Devon County Council – OSHENS
Sherford Vale School	Devon Health and Safety Service, Devon County Council – OSHENS
Sir James Smith's	Cornwall County Council Safety Service until Sept 2024 Then DCC
South Dartmoor CC	Devon Health and Safety Service, Devon County Council – OSHENS
St Breward	Cornwall County Council Safety Service until Sept 2024 Then DCC
St Teath	Cornwall County Council Safety Service until Sept 2024 Then DCC
Stowford School	Devon Health and Safety Service, Devon County Council – OSHENS
Ugborough PS	Devon Health and Safety Service, Devon County Council – OSHENS
Wembury Primary School	Devon Health and Safety Service, Devon County Council – OSHENS
Woodford School	Devon Health and Safety Service, Devon County Council – OSHENS
Woodlands Park Primary School	Devon Health and Safety Service, Devon County Council – OSHENS
Yealmpton Primary School	Devon Health and Safety Service, Devon County Council – OSHENS

SECTION 1

1.0 STATEMENT OF INTENT

The Trustees of Westcountry Schools Trust will strive to achieve the highest standards of health, safety and welfare consistent with their responsibilities under the Health and Safety at Work Act 1974 and other statutory and common law duties.

This policy sets out how these duties will be conducted and includes a description of the Trust's organisation and arrangements for dealing with different areas of risk. Section 2 Delegated Responsibility, will establish specific responsibilities at all levels of the Trust' organisation. Section 3 Health and Safety Functions, will outline the specific arrangements put in place to manage these areas of risk and hence to meet the Trust's obligations under the law.

This policy will be brought to the attention of all members of staff through staff induction and staff handbook. A master copy is kept in the main office of all Trust schools and is available online.

This policy statement and the accompanying organisation and arrangements will be reviewed yearly by the Trust Board.

Everyone at all levels of WeST must comply with this policy. Breaches of the this policy may be dealt with under a disciplinary policy

Iain Grafton
Chair for the Trust Board

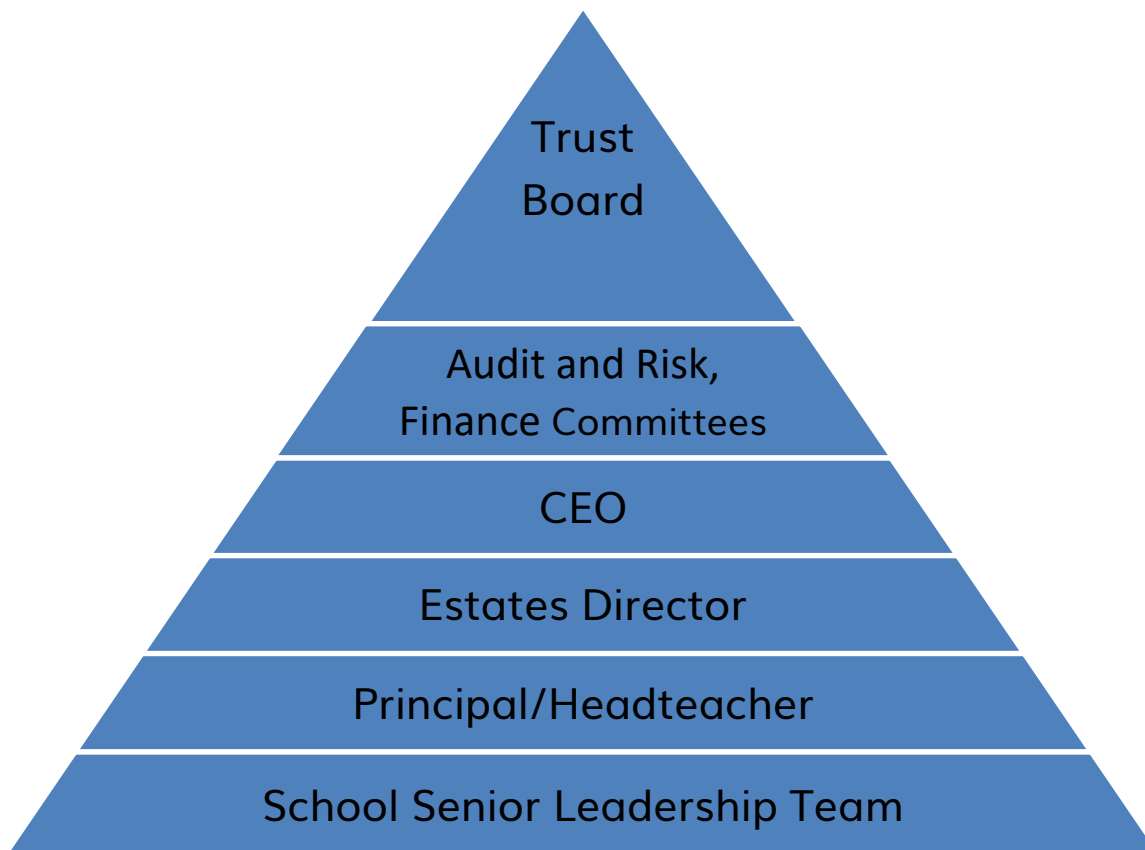
14 October 2024
Date

Rob Haring
CEO

14 October 2024
Date

SECTION 2 DELEGATED RESPONSIBILITIES

Pictorial of delegeted responsibilities for Health and Safety



2.0 The Duties of the Trust Board

- 2.1 To produce and regularly review the Health and Safety Policy for the Trust. This policy will reflect the requirements of the Health and Safety at Work Act 1974 by outlining arrangements to ensure, so far as is reasonably practicable, the health, safety and wellbeing of staff, students and others affected by the organisation
- 2.2 To monitor both compliance with, as well as the effectiveness of, this policy
- 2.3 To provide adequate resources to meet the Trust's legal responsibilities as well as compliance with this policy
- 2.4 To assist in discharging its legal obligations the Trust has appointed a 'competent person' as defined by the Management of Health and Safety at Work Regulations 1999
- 2.5 All settings which are part of the Westcountry Schools Trust in addition to this policy will also have a separate Health and Safety policy which sets out specific guidelines relevant to the setting they are operating within. See Appendix 1
- 2.6 To review the WeST corporate Risk Register
- 2.7 To delegate to the Estates Committee through a Scheme of Delegation

3.0 The Duties of the Finance Committee, Audit and Risk Committees

- 3.1 Although the Trust Board have delegated responsibility to the Finance Committee for capital projects, and the Audit and Risk Committee for health and safety, they will make recommendations and provide advice to the Trust Board for approval
- 3.2 The responsibility of the Estate Committee is the same as the Trust Board, although accountability remains with the Board
- 3.3 On the Committee there are currently Trust Board members who can vote

4.0 The Duties of the CEO

- 4.1 The CEO is ultimately responsible for health and safety in the workplace and ensures good practice is developed and implemented with a proactive health and safety management and culture
- 4.2 Reports to the Trust Board and Finance, Audit and Risk Committees
- 4.3 Delegates responsibility to the Estates Director

5.0 The Duties of the Estate Director

- 5.1 The Estates Director has responsibility for the corporate Health and Safety across WeST, including writing of Trust-wide policies and risk assessments. Arrange and oversee annual Health and Safety audits and ensure there is a positive culture to health and safety throughout the organisation. The Estates Director is responsible to the CEO.
 - 5.1.1 In particular, the Estates Director will:
 - 5.1.1.1 Cooperate with both the Finance, Audit and Risk Committees and the Trust Board to ensure that this policy and its associated arrangements are implemented and complied with
 - 5.1.1.2 Communicate the policy and other appropriate health and safety information to all Principals and Head Teachers
 - 5.1.1.3 Report to the Audit and Risk Committee and the Trust Board on health and safety performance and to monitor both compliance with, as well as the effectiveness of, this policy
 - 5.1.1.4 Ensure that the premises, plant and equipment are maintained in a safe and serviceable condition
 - 5.1.1.5 Identify the training needs of estates staff, Principals and Head Teachers and ensure that staff are competent to carry out their roles and are provided with adequate information, instruction and training
 - 5.1.1.6 Ensure there is a third party service provider to provide technical support and undertake regular audits to ensure compliance
 - 5.1.1.7 To instil a positive and proactive health and safety culture throughout WeST

- 5.1.1.8 Monitor purchasing and contracting procedures to ensure health and safety is included in specifications and contract conditions
- 5.1.1.9 To ensure all contractors are aware of their health and safety responsibilities
- 5.1.1.10 To ensure all staff inductions include Health and Safety awareness.

6.0 The Duties of the Principal/Head Teacher

- 6.1 The Principal/Head Teacher has day-to-day responsibility for health and safety management and will take all reasonable practicable steps to secure the health and safety of students, staff and others using the Trust premises or participating in Trust sponsored activities
- 6.2 In particular, the Principal/Head Teacher will:
 - 6.2.1 Ensure that suitable and sufficient risk assessments of work activities are undertaken, that a written record of the significant findings of these assessments is kept and that these assessments are subject to regular review
 - 6.2.2 Communicate the policy and other appropriate health and safety information to all relevant people
 - 6.2.3 Undertake building inspections and report to the Estate Director any concerns including the premises, plant and equipment
 - 6.2.4 Report to the Estates Director any significant risks or policy requirements which cannot be met within the WeST/school budget
 - 6.2.5 Identify the training needs of students and staff and hence ensure that all students and staff are competent to carry out their roles and are provided with adequate information, instruction and training
 - 6.2.6 Ensure consultation arrangements are in place for staff and their trade union representatives where appointed
 - 6.2.7 Monitor purchasing and contracting procedures to ensure health and safety is included in specifications and contract conditions
 - 6.2.8 Receive reports from enforcement officers and advisory bodies and, where appropriate, take relevant actions to address issues raised and inform the Estates Director
 - 6.2.9 Promote a positive health and safety culture by leading by example
 - 6.2.10 Ensure accident and near miss reporting is recorded and where required investigated and engage the Estates Director where required
 - 6.2.11 Ensure there is a suitable recording and monitoring system of visitors
- 6.3 Whilst overall responsibility for health and safety cannot be delegated, the Principal/Head Teacher may choose to delegate certain tasks to the relevant health and safety persons in the school.

7.0 The Duties of the Health and Safety Environment Manager

- 7.1 The Health and Safety Manager has the delegated task of Health and Safety management and processes across West in order that Principals/Head Teachers and Estates Teams can discharge their duties in relation to day-to-day health and safety management. The Health and Safety Manager is directly responsible to the Estates Director and acts as the technical expert
- 7.2 To do this the Health and Safety Manager will:
- 7.2.1 Write, develop and review the Health and Safety Policy and sub policies and procedures to the Audit and Risk Committee and Trust Board
 - 7.2.2 Lead and manage the risk assessment process for the Trust Board
 - 7.2.3 Ensure that Safe Systems of work are in place and followed
 - 7.2.3 Lead general workplace monitoring inspections and performance monitoring processes and report findings to the Principal and Trust Board
 - 7.2.4 Liaise with the Facilities Manager regarding records of inspections and maintenance to plant or facilities and ensure that remedial actions identified are either addressed without delay or brought to the attention of the Trust Board if funds are not available
 - 7.2.5 To liaise with Principals/Head Teachers on Health and Safety requirements within their schools
 - 7.2.6 Assist with the identification of training needs and training delivery across the Trust to ensure that staff and students are adequately instructed
 - 7.2.7 Collate WeST-wide accident and incident information from schools and, when necessary, carry out accident and incident investigations and lesson learnt
 - 7.2.8 Arrange periodic health and safety audits and liaise with the Principal/Head Teacher and Trust Board in relation to findings and any associated remedial actions
 - 7.2.9 To liaise with staff managing estates projects and advise on CDM regulations
 - 7.2.10 To provide Health and Safety training to the WeST Trust Board, Governors and Staff
 - 7.2.11 Develop and write the Health and Safety induction

In the transitional period while the above hierarchy is being implemented as part of the Estates Strategy, each school must ensure compliance through the Principal/Head Teacher and liaise with the Estates Director and agreed service provider, and seek advice to ensure safety standards are met.

8.0 The Duties of Heads of Departments/Supervisory Staff/Subject Leaders

- 8.1 The Heads of Departments/Supervisory Staff/Subject Leaders have specific

delegated tasks in relation to health and safety management within their departments/subject areas

- 8.2 They must ensure that:
- 8.2.1 They apply the arrangements described in this Health and Safety Policy to their own department or area of work, including the arrangements described in any associated guidance notes
 - 8.2.2 Staff under their control are aware of and follow any externally adopted health and safety guidance
 - 8.2.3 Risk assessments are undertaken for the work areas for which they are responsible and that identified control measures are implemented
 - 8.2.4 They ensure that appropriate safe working procedures are brought to the attention of all staff under their control and are enforced effectively
 - 8.2.5 They take appropriate action on health, safety and welfare issues referred to them, informing the Principal/Head Teacher or Estates Director of any problems they are unable to resolve within the resources available to them
 - 8.2.6 They carry out regular inspections of their areas of responsibility and report/record these inspections to the Principal/Head Teacher or Estates Director
 - 8.2.7 They ensure the provision of sufficient information, instruction, training and supervision to enable staff and students to avoid hazards and contribute positively to their own health and safety
 - 8.2.8 All accidents (including near misses) occurring within their area of responsibility are promptly reported and investigated
 - 8.2.9 Partake in Health and Safety audit both internal and external by ensuring all relevant documentation is in place

9.0 The Duties of all Members of Staff

- 9.1 Under the Health and Safety at Work Act 1974 all employees have general health and safety responsibilities. All employees are obliged to take care of their own health and safety whilst at work along with that of others who may be affected by their actions. This also applies to volunteers who are under the control of each school in the Trust
- 9.2 Specifically, all employees have a responsibility to:
- 9.2.1 Take reasonable care for the health and safety of themselves and others in undertaking their work
 - 9.2.2 Comply with the Trust's health and safety policy arrangements at all times
 - 9.2.3 Report all accidents and incidents in line with the reporting procedure
 - 9.2.4 Cooperate with school management on all matters relating to health and safety
 - 9.2.5 Not intentionally interfere with or misuse any equipment or fittings

- provided in the interests of health safety and welfare
- 9.2.6 Report all defects in the condition of premises or equipment and any health and safety concerns immediately to their line manager
 - 9.2.7 Ensure that they only use equipment or machinery that they are competent/have been trained to use
 - 9.2.8 Make use of all necessary control measures and personal protective equipment provided for safety or health reasons
 - 9.2.9 Read and follow and familiarise with all relevant Health and Safety documentation and updates and provide feedback where required

10.0 Students

- 10.1 Students, in accordance with their age and aptitude, are expected to:
 - 10.1.1 To exercise personal responsibility for the health and safety of themselves and others
 - 10.1.2 To observe standards of behaviour and dress consistent with safety and/or hygiene
 - 10.1.3 To observe all the health and safety rules of the school and, in particular, the instructions of staff given in an emergency
 - 10.1.4 Not wilfully misuse, neglect or interfere with facilities or equipment provided for their and others' health and safety
 - 10.1.5 To report issues/observations of health and safety concerns to a teacher or responsible adult

11.0 Contractors

- 11.1 All contractors who work on the Trust premises are required to identify and control any risks arising from their activities and inform the estates representative of any risks that may affect the staff, students and visitors
- 11.2 All contractors must be aware of this policy and the associated emergency procedures and comply with these requirements at all times
- 11.3 In instances where the contractor creates hazardous conditions and refuses to eliminate them or take measures to make them safe, the Estates Department representative/Principal/Head Teacher will take such actions as are necessary to prevent staff, students and visitors being put at risk from injury

SECTION 3 HEALTH AND SAFETY MANAGEMENT FUNCTIONS

12.0 Arrangements

- 12.1 The 'arrangements' for health and safety, i.e. the specific measures put in place to manage particular risks, must be agreed and outlined in this section. The Trust, as an independent employer in their own right, is free to determine their own arrangements within the boundaries of the law.

12.2 List of areas to cover is included below:

- 13 Risk Assessment
- 14 Accident/Incident Reporting
- 15 Asbestos
- 16 Communication and Training
- 17 Consultation
- 18 Construction Design Management
- 19 Contractors
- 20 Curriculum Activities
- 21 Display Screen Equipment
- 22 Drivers Handbook
- 23 Electricity at Work
- 24 Fire Safety
- 25 First Aid
- 26 Gas
- 27 Hazardous Substances
- 28 Health and Safety Induction
- 29 Health and Safety Inspections
- 30 Legionella
- 31 Lettings
- 32 Lone working
- 33 Maintenance
- 34 Medication
- 35 Monitoring
- 36 Moving and Handling
- 37 Noise at Work
- 38 Off-site Visits
- 39 PPE
- 40 Personal Safety and Security
- 41 Radon
- 42 Radioactive Sources
- 43 Stress/Wellbeing
- 44 Trees
- 45 Vehicle Movement around site
- 46 Work at Height
- 47 Work Experience
- 48 Workplace Safety

13.0 Risk Assessment

- 13.1 The underlying process which informs safety management is risk assessment. Assessments of significant risks will be made with those persons responsible for the activity/area affected and the significant findings of these decisions will be recorded in writing. This will be achieved principally by ensuring adequate risk assessments that address all the significant risk in the Trust are

in place.

- 13.2 Risk assessments are available for all staff to view and are held centrally with the Health and Safety Manager. Wherever possible, affected staff will be included in the risk assessment process. Staff and other affected parties will be briefed on the risk assessment findings.
- 13.3 Risk assessment records will be reviewed annually or every 3 years depending upon the levels of risk or should a task change. This will be identified on the risk assessments.

NB. Other arrangements in alphabetical order:

14.0 Accident/Incident Reporting

- 14.1 All employee accidents must be reported to the Trust Board. All accidents must be reported using the local procedures
- 14.2 Accidents to students and other non-employees must be recorded in the accident book. Those accidents to students and members of the public which are work-related, in that they have arisen out of a material defect or organisational failure, must also be reported to the Trust Board
- 14.3 Parents/carers will be notified immediately of all major injuries
- 14.4 The Principal/Head Teacher will investigate accidents and take remedial steps to avoid similar instances recurring. The Health and Safety Manager will assist as required
- 14.5 All accidents which fall within the scope of the Reporting of Diseases, Injuries and Dangerous Occurrence Regulations 2013 (RIDDOR) will be reported to the HSE

15.0 Asbestos

- 15.1 The arrangements for the management of asbestos on each school/other site in the Trust are detailed in the Asbestos Management Plan (AMP). This will be located at each individual school in the Trust along with a central record held with WeST.
- 15.2 The Asbestos Register is held at each school within the Trust and will be made available to all staff and contractors prior to **any** work commencing on the fabric of the building or fixed equipment containing asbestos such as boilers, kilns, wall finishes, floor coverings. No work can commence until permission to work has been given by the authorising manager named in the AMP.

The authorising manager shall ensure:

- 15.2.1 That the Asbestos Management Plan is reviewed annually and that any changes are approved by the Trust Board
- 15.2.2 That the Asbestos Register is consulted at the earliest possible opportunity in the planning process and that **all** work on the fabric of the building or fixed equipment is approved via the completion of the relevant form
- 15.2.3 A visual inspection of those asbestos containing materials

remaining on-site is conducted and recorded on the relevant form according to the frequencies identified in the AMP

15.2.4 All changes to asbestos containing materials on site, whether due to removal works or accidental damage, will be recorded in the Register

15.3 All parties will ensure that any damage to materials known or suspected to contain asbestos should be reported to the Health and Safety Manager at the earliest opportunity

16.0 Communication and Training

16.1 The Health and Safety Law poster is displayed in the entrance of all schools within the Trust and further information, including copies of the policy, can be requested from the Health and Safety Manager.

16.2 Health and Safety Training

16.2.1 All employees will be provided with:

16.2.1.1 induction training in the requirements of this policy

16.2.1.2 updated training in response to any significant change

16.2.1.3 training in specific skills needed for certain activities as identified by the relevant risk assessment

16.2.1.4 refresher training where required

16.3 Training matrix will be kept at each school or department and/or personnel files. The Health and Safety Manager is responsible for ensuring health and safety training needs are met for all staff. This includes a system for ensuring that refresher training is undertaken within the prescribed time limits

16.4 Each member of staff is also responsible for drawing the relevant line manager's attention to their own personal needs for training and for not undertaking duties unless they are confident that they have the necessary competence. All employees shall undertake work tasks as instructed and trained

17.0 Consultation

17.1 Members of staff with concerns should raise them initially with their departmental head or the Health and Safety Manager. If required, requests for external advice should then be sought via the Health and Safety Manager from the relevant provider

17.2 Staff should feel free to contact the appropriate trade union appointed Safety Representative. The Trust Board welcome the support of trade unions in health and safety matters.

18.0 Construction Design Management. (CDM)

18.1 The Construction (Design and Management) Regulations 2015 (CDM) apply to the entire construction process to **all** construction projects regardless of size or duration. As the Client, WeST have overall responsibility for the

- successful management of a project which includes effective control of health and safety
- 18.2 The CDM regulations apply to all construction based projects which are either notifiable or non-notifiable. Where projects become notifiable additional legal duties are placed on all parties but only if the work:
 - 18.2.1 Lasts longer than 30 days **and**
 - 18.2.2 Has more than 20 workers working simultaneously at any point **or**
 - 18.2.3 Exceeds 500 person days
 - 18.3 If the project becomes notifiable, the HSE must be notified with an F10 notice at the earliest opportunity. This must be issued by the Client.
 - 18.4 WeST are committed to the aims of the CDM regulations and aim to ensure compliance throughout the entire construction process from inception to completion. The Estates Team must:
 - 18.4.1 Appoint the right people at the right time (in writing)
 - 18.4.1.1. If we do not appoint a Principal Designer or a Principal Contractor (only if there is more than one contractor on-site) as the client it is deemed that those duties become WeST's responsibility.
 - 18.4.2 Ensure there are arrangements in place for managing and organising the project
 - 18.5 Allow adequate time
 - 18.6 Provide information to the designers and contractors i.e. written preconstruction information
 - 18.7 Communicate effectively with all parties
 - 18.8 Ensure adequate welfare facilities
 - 18.9 Ensure a construction phase plan is in place
 - 18.10 Keep the health and safety file
 - 18.11 Ensure all parties are carrying out their duties
 - 18.12 Protect members of the public including employees
 - 18.13 Ensure work places are designed correctly
 - 18.14 Notify the HSE if the project is deemed notifiable
 - 18.15 If we do not comply with CDM 2 015, we are likely to be failing to influence effective health and safety management which could be putting all workers and occupants at risk of harm, not achieving good standards or value for money

19.0 Contractors

- 19.1 All contractors must report to Main Reception where they will be asked to sign the visitors' book and wear an identification badge. Contractors will be issued with guidance and requirements for safe practice whilst on-site. Where necessary, contractors will also be requested to sign to confirm that they have read and understood the Asbestos Register
- 19.2 To ensure contractor competency, the Health and Safety Manager will undertake competency checks prior to engaging any contractor

- 19.3 In respect of construction works, the Health and Safety Manager will ensure the client's duties under the Construction (Design and Management) Regulations 2015 have been understood and complied with

20.0 Curriculum Activities

- 20.1 Risk assessments for curriculum activities will be carried out by the relevant Heads of Department/Subject Coordinator using the appropriate risk assessments

21.0 Display Screen Equipment (DSE)

- 21.1 All staff that use computers daily for continuous spells of an hour or more, or a total daily time of three hours or more, will have a DSE assessment carried out
- 21.2 Staff identified as DSE users are entitled to an eyesight test for DSE use every two years by a qualified optician and a contribution of cost towards corrective glasses (if required specifically for DSE use). Employees should contact HR at hr@westst.org.uk for details of the scheme

22.0 Driver Handbook

- 22.1 The Trust will ensure all Trust owned/leased vehicles meet the legal requirement and are roadworthy
- 22.2 The Trust will ensure all drivers meet the legal and insurance requirement to drive both Trust and privately owned vehicles.
- 22.3 All Trust vehicles will have MOTs and servicing as well as a driver inspection prior to driving. The checks are all recorded.
- 22.4 Drivers will need to demonstrate they are legally able to drive with licence checks.

Where required, additional training will be undertaken. Insurance must be in place either by the Trust or by the individual

- 22.5 Staff using privately owned vehicles must ensure the vehicle meets the legal requirements and that the staff member has the correct insurance

NB: See the WeST Driver Handbook available from HR

23.0 Electricity at Work

- 23.1 All staff will conduct a visual inspection of plugs, cables and electrical equipment prior to use. Defective equipment to be reported
- 23.2 All portable items of electrical equipment will be subject to formal inspection and, where appropriate, a testing regime on an identified cycle dependent upon the level of risk associated with the particular appliance type
- 23.3 The Facilities Manager/Premises Manager/Caretaker is responsible for keeping an up to date inventory of all relevant electrical appliances within their areas of responsibility and for ensuring that all equipment is inspected and where appropriate, tested according to the frequencies set out above
- 23.4 Personal items of equipment should not be brought into the school without

prior authorisation and must be subjected to the same inspection process as school-owned equipment

- 23.5 A fixed Electrical Installation Test will be conducted every 5 years. The Facilities Manager/Premises Manager/Caretaker is responsible for arranging the remedial actions for all Code 1 and 2 non-compliances identified in the report
- 23.6 For full details relating to work equipment and electrical safety, reference should be made to OSHENS (HSA16 Electrical Safety and HSA58 Work Equipment Arrangements Notes).

24.0 Fire Safety

- 24.1 The Facilities Manager is responsible for ensuring the schools fire risk assessment is undertaken using the risk assessment document and controls implemented accordingly. The fire risk assessment is located in the school's main office and will be reviewed annually
- 24.2 Fire and emergency evacuation procedures are detailed in the Fire Emergency Plan document which is located in all schools and a summary Fire Action notice will be posted at the exit point of each room. These procedures will be reviewed along with the fire risk assessment and are made available to all staff as part of the school's induction process
- 24.3 All staff will be briefed in the contents of the Fire Emergency Plan on an annual basis. This will be augmented by fire drills which will be undertaken termly and results recorded in the Fire Log book. Additional specific fire safety training will be undertaken as identified in the Fire Risk Assessment
- 24.4 Evacuation procedures are also made known to all contractors/visitors
- 24.5 Emergency contact and key holder details are held with the Emergency Procedures which are completed by each school and held both at school and centrally at the Trust offices
- 24.6 The Facilities Manager, working with the Health and Safety Manager, is responsible for ensuring that the Trust school Fire Logs are kept up to date and that the following inspection/maintenance is undertaken:
- 24.6.1 Dates of fire fighting equipment inspections and checks – Facilities Manager
 - 24.6.2 Dates and outcome of fire alarm system(s) inspections and checks – Facilities Manager
 - 24.6.3 Dates and outcome of emergency lighting system - records of tests – Facilities Manager
 - 24.6.4 Dates and outcome of visits by Local Fire and Rescue – Principal/ Head Teacher/Facilities Manager
 - 24.6.5 List of all fire training/instruction carried out – Facilities Manager/Principal/ Head Teacher
 - 24.6.6 Dates and outcome of fire drills – Principal/Head Teacher
- 24.7 Procedures for other critical incidents and off-site emergencies are contained within each school's Emergency Management Plan which is located in the

Principal/Head Teacher's office and will be reviewed annually

25.0 First Aid

- 25.1 The school has risk assessed the need for first aid provision and this is recorded on the risk assessment document
- 25.2 The following first aid provision has been provided accordingly:
 - 25.2.1 First Aid at Work Level: see the school's Health and Safety Manager for up to date records
 - 25.2.2 Emergency First Aid at Work Level: see the school's Health and Safety Manager for up to date records
- 25.3 First Aid qualifications remain valid for 3 years. The Health and Safety Manager will ensure that refresher training is organised to maintain competence and that new persons are trained should first aider trained staff leave
- 25.4 First Aid boxes are located at suitable locations in each school i.e. all receptions, sports hall, CDT area, Art, and Science – see the school's First Aid Policy on the College website for further details
- 25.5 The authorised person for each school is responsible for maintaining the contents of first aid boxes and replenishing stocks as necessary

26.0 Gas Safety

- 26.1 The Trust will ensure the gas safety management Reg 1996 and Gas Safety (installation and use) 1998 will be complied with
- 26.2 All gas appliance must be recorded on an asset register
- 26.3 All gas appliances including boilers, Catering and Design Technology, Science classroom (see CLEAPSS documentation) equipment will have a compliance inspection and service. All inspections will be documented and held on file
- 26.4 All gas operatives, both Trust employees and contractors, will need to be registered with Gas Safe to the required standard

27.0 Hazardous Substances

- 27.1 Where it is consistent with the effective performance of the task in hand, every attempt will be made to choose the least harmful chemical possible.
- 27.2 Within curriculum areas (where relevant) Heads of Department are responsible for the safe use and storage of hazardous substances within their areas of control. Specifically, Heads of Department must ensure that an up to date inventory of hazardous substances and CLEAPSS risk assessments are in place within their department. It shall be ensured that the findings of risk assessments are incorporated into point-of-use documents within the departmental risk assessments and method statements
- 27.3 In all other areas the responsible manager shall ensure that:
 - 27.3.1 An inventory of all hazardous substances used within their area of responsibility is compiled and kept up to date
 - 27.3.2 Material Safety Data Sheets (MSDS) are obtained from the relevant

supplier for all such materials

- 27.3.3 Risk assessments are conducted and that these assessments are recorded and control measures are understood by those staff that are exposed to the product/substance. This will include the identification and provision of appropriate Personal Protective Equipment
- 27.3.4 All chemicals are appropriately and securely stored out of the reach of students
- 27.3.5 All chemicals are kept in their original packaging and never decanted into unmarked containers

28.0 Health and Safety Induction

- 28.1 All new staff to WeST will have an induction to WeST and the specific school. Within this induction each staff member is given a access to this policy and must be made aware of their responsibility to Health and Safety, to include any risk assessments that are relevant, how to report an accident, what to do in the event of a activation of the fire alarm etc and where to find further information.

29.0 Health and Safety Inspections

- 29.1 It is essential that Health and Safety inspections are undertaken to support teams in their delivery of Health and Safety within schools
- 29.2 Each primary school will receive two half-day inspections per year covering various aspects of Health and Safety. *The WeST HandS Checklist will be used periodically by the HSandE Manager along with members of school management to ascertain compliance and progress in closing out actions from previous reviews and audits*
- 29.3 Secondary schools will receive two half-day visits per year across six departments with each department being inspected every three years, Science, Design Technology, Sports, Arts, Facilities and Management. *In addition each secondary school will also receive at least two inspections using the WeST HandS Checklist with the HSandE Manager and school management involved in the review*
- 29.4 Actions from the inspections must be completed satisfactorily within the agreed timeframe.

30.0 Legionella

- 30.1 WeST must ensure compliance with the 'the Control of Legionella bacteria in water system'; known as L8 and HSE guide 274
- 30.2 Legionella must be managed and controlled using a water management plan and risk assessment that will be managed by the Facilities Manager and ensure that the identified operational controls are being conducted and recorded on the relevant documentation
- 30.3 The risk assessment will be reviewed either where significant changes have

occurred to the water system or on an annual basis

31.0 Lettings/shared use of premises

31.1 The Principal/Head Teacher must ensure that the hirer/tenant has public liability insurance and will share with the hirer/tenant all relevant Trust health and safety information. The hirer/tenant will be required to provide a copy of their risk assessment for all their activities in order to identify any hazards either to the building itself or to the safety or health of the occupants within it in accordance with KCSiE (Keeping Children Safe in Education)

32.0 Lone Working

32.1 Lone working is defined as 'workers who are separated from their work colleagues'. Members of the public, visitors or students are not working colleagues

32.2 To manage risk associated with lone working, a risk assessment must be carried out and a safe system of work developed. Various control measures may have to be introduced into the safe system of work, such as:

32.2.1 No lone working in high risk activities, e.g. working at height

32.2.2 Arrangement for remote supervision and good communication including emergency contact numbers

32.2.3 No lone meetings with parents/carers in certain circumstances for example, where there is concern about the parent/carer's conduct the meeting will need to be conducted with two staff present

32.2.4 Use of alarm systems

This is not an exhaustive list; specific tasks will need careful consideration of the management of the associated risk.

33.0 Maintenance of Plant and Equipment

33.1 Regular inspection and testing of school equipment is conducted to legislative requirements by competent contractors. Records of such monitoring will be kept by the Facilities Manager. All staff are required to report any problems found with plant/equipment to the responsible manager. Defective equipment will be clearly marked and taken out of service by storing in a secure location pending repair/disposal

33.2 The following specific statutory inspections and tests will be undertaken:

33.2.1 Six monthly lift Thorough Examination, to be undertaken by an approved lift specialist

33.2.2 Annual Pressure Vessel Thorough Examination according to a Written Scheme, to be undertaken by the Trust's insurers

33.2.3 Annual gas appliance inspection and maintenance, to be undertaken by a Gas Safe approved contractor

33.2.4 Annual gas tightness test, to be undertaken by a Gas Safe approved contractor

33.2.5 5 yearly electrical test and report carried out by an approved NICEIC

Electrical contractor

Recommendations raised from inspections shall be required to be resolved

- 33.3 The Facilities Manager is responsible for identifying all plant and equipment in an equipment register for their area of responsibility. Where such plant and equipment present significant hazards, risk assessments will be undertaken and any training needs and personal protective equipment requirements are provided

34.0 Medication Arrangements

- 34.1 In line with DfE guidance there may be occasions when schools administer medication (and on occasions this could be both prescription medication and non-prescription) with the consent of the parents/carers
- 34.2 Unauthorised medication (undeclared to teaching staff and therefore without parental consent) is not allowed in any school. All authorised medication is to be kept securely in a locked cupboard in the Medical Room
- 34.3 Care plans should be signed by parents/carers for all medication that the Principal/Head Teacher or Designated Lead for the school has agreed to be administered within school time
- 34.4 Trained staff administer medication in line with the child's care plan, the time, amount and any reactions are recorded on the child's medication record sheet
- 34.5 Each school within WeST is required to produce its own Medication Policy which must reflect the population need

35.0 Monitoring

- 35.1 The Estates Director assisted by the Health and Safety Manager will put in place procedures to monitor estates compliance with the arrangements described in this policy. The central component of this process is the 3 yearly Health and Safety Review process
- Feedback from this process is to be referred to the Trust Board
- 35.2 A general inspection of the site will be conducted annually and be undertaken by the Health and Safety Manager. Inspections of individual departments will be carried out by Heads of Department or nominated staff
- 35.3 In both cases the person(s) undertaking inspection will complete a report in writing and submit this to the Estates Director and the Trust Board. Responsibility for following up items detailed in the safety inspection report will rest with the Health and Safety Manager to liaise with the relevant managers
- 35.4 Other processes employed to monitor compliance with this policy and health and safety performance in general include:
- 35.4.1 Training audits, review of policies, updates from central government

36.0 Moving and Handling

- 36.1 Generic risk assessments for regular manual handling operations are undertaken as described in the risk assessment section. Staff engaged in these activities will be provided with information on safe moving and handling techniques and will receive specific training where the need is identified in the risk assessment
- 36.2 All manual handling activities which present a significant hazard, which are not accounted for in the generic risk assessments described above, will be reported to the Health and Safety Manager. Where such activities cannot be avoided, a specific risk assessment will be conducted to ensure such risks are adequately controlled. A copy of this assessment will be provided to employees who must follow the instructions given when carrying out the task. Staff should ensure that they do not lift heavy items unless they have received a briefing on the control measures in place
- 36.3 All moving and handling of students will be risk assessed by the SENCo and recorded in a specific Handling Plan for the individual concerned. All staff who move and handle students will receive appropriate training both in the controls listed in the Handling Plan and specific training on any lifting equipment that they may be required to use. Equipment for moving and handling people is subject to inspection on a 6-monthly basis.

37.0 Noise at Work

- 37.1 The Trust will comply with the Control of Noise at Work Reg 2005. This does not include music or entertainment
- 37.2 Where possible noise should be managed in order to not only protect the user but also people in the vicinity. Where required hearing protection must be provided for areas where noise is greater than 85 decibels on an average of daily or weekly periods of time.

38.0 Off-site Visits

- 38.1 The Trust has a separate policy for Outdoor Education, Visits and Off-site Activities Health and Safety Policy. Please see this policy for further clarification (Evolve).

39.0 Personal Protective Equipment (PPE)

- 39.1 The Trust has a legal responsibility to provide the correct Personal Protective Equipment (PPE) for each task undertaken should PPE be required, which is determined by risk assessment. PPE is equipment that will protect the user against health or safety risks at work. It can include items such as safety helmets, gloves, eye protection, high-visibility clothing, safety footwear and safety harnesses. It also includes respiratory protective equipment (RPE). In Health and Safety risk management hierarchy, PPE is the last protection against risk, with elimination of risk, replace the risk, isolate people from the risk, safe systems of work to be considered in the first instance

40.0 Personal Safety and Security

- 40.1 The Trust believes that staff should not be expected to put themselves in danger and will not tolerate violent/threatening behaviour to its staff. A separate specific behaviour policy is in place regarding staff conduct
- 40.2 Staff will report any such incidents in accordance with agreed accident/incident reporting procedures for the school
- 40.3 Working alone will be avoided wherever possible. Work carried out unaccompanied or without immediate access to assistance will be risk assessed by the relevant line manager in order to identify and implement control measures. Work involving potentially significant risks (for example work at height) will not be undertaken whilst working alone. In order to ensure that this is the case, staff working outside normal school hours must obtain permission of the Principal/Head Teacher and/or the Trust's CEO
- 40.4 The requirement to undertake a lone working risk assessment will also extend to working alone off-site where staff conduct home visits (see lone working)
 - 40.4.1 **School staff responding to call outs**
 - 40.4.1.1 Nominated key holders attending empty premises where there has been alarm activation should do so with a colleague where possible. They should not enter the premises unless they are sure it is safe to do so. If alone, the person should leave details with a colleague and report to them when leaving the site
 - 40.4.1.2 Risk assessments will be reviewed annually or after significant change and recorded by amending the risk assessment document
 - 40.4.2 **Trust Security**
 - 40.4.2.1 The Health and Safety Manager is responsible for undertaking a risk assessment for site security in order to identify and implement control measures in this area
 - 40.4.2.2 This will be reviewed annually or after significant change and recorded by amending the relevant risk assessment document

41.0 Radon Gas

- 41.1 Some schools within the Trust are located in a radon affected area as defined by Public Health England (PHE). Consequently, radon gas levels will be measured on a 10 year cycle and detectors returned to PHE for analysis
- 41.2 If levels are below the 400 Bq/m³ threshold, this process of measurement will continue. If readings exceed the 400 Bq/m³ threshold a Radiation Protection Adviser (RPA) will be engaged and a risk assessment of staff exposure will be undertaken in consultation with the RPA. Based upon the findings of this assessment, suitable mitigation systems will be identified and installed to reduce the radon level to well below 400 Bq/m³. These systems will be maintained.

42.0 Radioactive Sources (where relevant)

- 42.1 The Trust has adopted the CLEAPSS guidance L93 '*Managing Ionising Radiations and Radioactive Substances in Schools and Colleges*' as its policy arrangements for the use of radioactive sources. The separate Standard Operating Procedures outline the precise procedures to be followed
- 42.2 CLEAPSS provide the Radiation Protection Adviser (RPA). The name and contact details are contained within the Standard Operating Procedures document

43.0 Stress/Wellbeing

- 43.1 The Trust is committed to promoting high levels of health and wellbeing and recognises the importance of identifying and reducing workplace stressors through risk assessment in line with the HSE's management standards
- 43.2 The Trust ensures suitable occupational health support is in place and specific arrangements for responding to individual concerns and monitoring staff workloads e.g. return to work procedures following absence. This is monitored by the Director of Human Resources
- 43.3 Where appropriate, risk assessment findings will be recorded on the relevant document

44.0 Tree Safety Management

- 44.1 An increasing number of tree species are becoming susceptible to disease which can not only cause the trees to die but can also leave them in a dangerous state. For example, Ash Dieback, is one of the currently emerging diseases likely to cause significant issues in the coming years. Physical damage to the tree can also cause safety issues and fungus can be a sign of underlying health issues with the tree
- 44.2 The Trust will ensure that formal tree inspections are undertaken for trees which present a significant risk because of their age, condition or proximity to pedestrian routes, busy areas or adjacent properties. The school will also arrange for an inspection following severe weather conditions
- 44.3 The Trust will arrange for regular independent expert surveys by a trained arboriculturalist to be carried out every *2 years and formally documented. This will increase to yearly where ASH Dieback has been discovered*
- 44.4 The Trust will also arrange for a local tree inspection at least every year by an employee, or other, who is competent by training, including refresher training at five yearly intervals. The type of training is decided locally. Ad hoc inspections are carried out on a risk assessment basis such as after severe storms

45.0 Vehicle Movement around Site.

- 45.1 The Trust is aware it is almost impossible to separate staff and children from moving vehicles. Where possible, segregation is the best result, however where this is not always possible a risk assessment must be undertaken and

distributed to all staff. Young children must be attended; older children need to be made aware of the risk. Control measures can be, clear road markings and signage, education, safe passage areas for both vehicles and people

46.0 Work at Height

- 46.1 Work at height will be avoided wherever possible. Work carried out at height where a significant injury could result will be risk assessed by the relevant line manager in order to identify and implement control measures. Staff who work at height will be briefed in risk
- 46.2 Assessment findings. When working at height (including accessing storage or putting up displays) appropriate step ladders or kick stools are to be used. Staff **must not** climb onto chairs etc.
- 46.3 Formal training on work at height will be undertaken where the need is identified in the work at height risk assessment. Such training will also be undertaken by those who line manage staff who work at height. The Trust's nominated person(s) responsible for work at height is the Health and Safety Manager.
- 46.4 The nominated person(s) shall ensure:
 - 46.4.1 All work at height is risk assessed and properly planned and organised
 - 46.4.2 All those involved in work at height are trained and competent to do so
 - 46.4.3 The use of access equipment is restricted to authorised users
 - 46.4.4 A register of access equipment is maintained and all equipment is regularly inspected and maintained
 - 46.4.5 Access to fragile surfaces is properly controlled by clear warning signs

47.0 Work Experience

- 47.1 Each school in the Trust will have a nominated person responsible for work experience placements
- 47.2 All placements are subject to pre-placement checks by Unifrog who will assess the suitability of the placement and maintain a list of suitable host employers. No work experience placement will go ahead if deemed unsuitable
 - 47.2.1 If significant hazards exist within the work tasks of any work placement, these will be risk assessed by the host employer and findings will be communicated to the student and their parents/carers
 - 47.2.2 All students are briefed before taking part in work experience on supervision arrangements and health and safety responsibilities
 - 47.2.3 Arrangements will be in place to visit/monitor students during the placement
 - 47.2.4 Emergency contact arrangements are in place (including out of school hours provision) in order that a member of school staff can be

contacted should an incident occur

47.2.5 All incidents involving students on work placement activities will be reported by the employer to the Trust at the earliest possible opportunity

47.3 If a school *hosts* a work experience placement, any significant hazards within the planned work tasks will be risk assessed by the host employer and findings will be communicated to the student and their parents/carers. This assessment will be recorded on the relevant risk assessment document.

48.0 Workplace safety

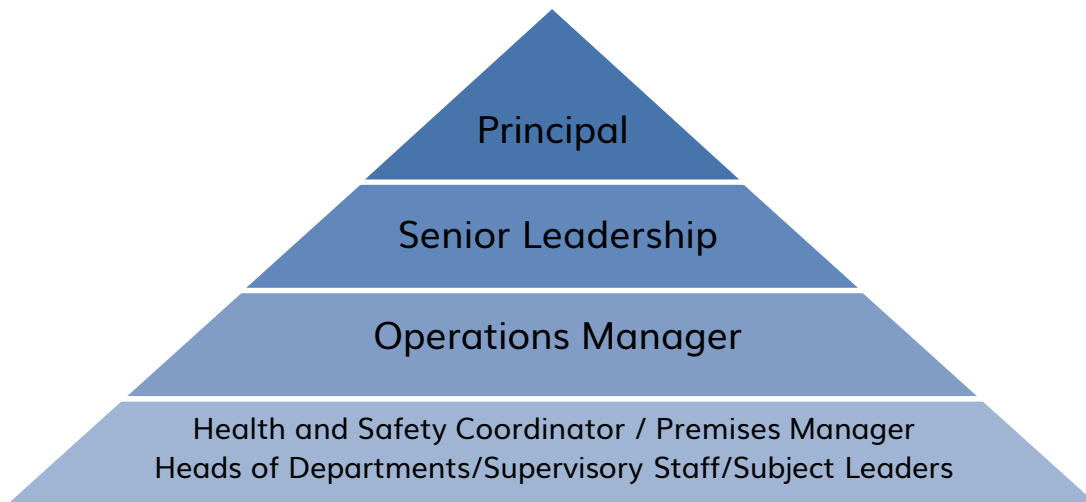
48.1 The Health and Safety Manager is responsible for undertaking a risk assessment for general sites and buildings safety in order to identify and implement control measures for the following site workplace hazards:

- 48.1.1 Slips, trips and falls
- 48.1.2 Glazing
- 48.1.3 Trees
- 48.1.4 Waste storage and disposal
- 48.1.5 Vehicle/pedestrian conflict

APPENDIX 1 – HEALTH AND SAFETY POLICY FOR IVYBRIDGE COMMUNITY COLLEGE

The points below are intended to clarify local procedures/adaptations to the WeST policy as applied at Ivybridge Community College. They will be reviewed on an annual basis by the Principal and Senior Leadership Team.

Pictorial of delegated responsibilities of Health and Safety at Ivybridge Community College.



Numbers refer to the paragraphs in the main WeST policy:

- 6.0 The day-to-day oversight of Health and Safety at Ivybridge Community College has been delegated to the Operations Manager. However, the Principal retains overall responsibility for Health and Safety.
- 7.0 The Operations Manager has the delegated task of leading Health and Safety management and processes at Ivybridge Community College in order that the Principal can discharge their duties in relation to health and safety management. The Operations Manager is directly responsible to the Principal and acts as the technical expert.
- 8.0 The Premises Manager, Heads of Departments, Supervisory Staff, Subject Leaders, College Directors and Pastoral Leaders have the delegated task of managing the Health and Safety management and processes at Ivybridge Community College for their areas of responsibility in order that the Principal can discharge their duties in relation to health and safety management. The Operations Manager and Health and Safety Coordinator or Premises manager act as the technical experts supporting staff in fulfilling their duties.
- 13.0 Risk Assessments are the responsibility of the individual departments and are reviewed by the Operations Manager and/or Health and Safety Coordinator. Copies are held by Department Leads.

- 14.0 Incident Reporting and recording keeping is overseen by the Operations Manager and OSHENS online portal.
- 16.0 The Principal's PA, senior administrators and/or department leads maintains a central record of all staff training and continuing professional development.
- 19.0 All contractors receive a hard or electronic copy of the Schools Contractors Induction Booklet from the Operations or Premises Manager. Contractors sign electronically acknowledging they have received and understood its content.
- 25.0 The has a separate policy for first aid procedures (see the First Aid Policy on the College website).
- 34.0 The College has a separate policy and procedures for Medical Conditions and Medication (see Student with Medical Conditions and Administration of Medicine Policy on the College website).
- 42.0 The College's Radiation Protection Advisor is a Subject Leader for Science.
- 47.1 Work experience is managed by the Senior Leadership Team and Enrichment Coordinator.
- 47.2 All placements pre-placement checks are carried out by Unifrog who will assess the suitability of the placement and maintain a list of suitable host employers. No work experience placement will go ahead if deemed unsuitable.