

Enrichment Programme 2023 - 2024

Ivybridge Community College



January 2024

Enrichment Programme 2023-2024

Enrichment is at the very heart of Ivybridge Community College, woven into all parts of College life and helping to provide a truly rounded educational experience for all students. That is why we are committed to ensuring that the College's Enrichment Programme has and will continue to thrive throughout this academic year.

Where to meet for the enrichment sessions?

All students are to meet at the venue stated on the timetable, for the time allocated and for the specific enrichment activity. The teacher in charge of each enrichment activity will meet and greet all students on arrival to the sessions and provide instructions for where to place bags and personal property.

Student Registration

There is no need for any students to sign up for the enrichment sessions, unless stated otherwise. Simply, turn up to the venue as stated on the timetable and your name will be recorded each time you participate.

Elite Squads and Registration

All Elite Squads are required to participate in training sessions as stated on the Enrichment Programme. All Elite Squad members have been automatically placed on to SIMS for registration for after-College enrichment. All Elite Squads are to meet at the venue stated on the timetable at the start of every session.

What to wear and bring?

Students are required to wear PE kit or Academy kit if they are participating in sport and physical activity. Classroom-based activities will require students to remain in College uniform. All students must remain smart in their kit and uniform. Please ensure all students have plenty to drink and a small snack for after College.



Please see below enrichment for all our students. The Enrichment Programme is divided into Departments.

Business and Economics Department						
Day	Time	Staff	Year Group	Enrichment Activity	Venue	Requirements
Wednesday	1.45 – 2.15pm	BKS and SBR	11	GCSE Economics Revision	M1.02	Snacks and a drink
Thursday	1.45 – 2.15pm	BKS, DCN and STK	11	GCSE Business Studios Revision	M1.02	Snacks and a drink

Creative Arts Department						
Day	Time	Staff	Year Group	Enrichment Activity	Venue	Requirements
Monday	11.10 – 11.45am	FSR	9 and 10	GCSE Art Study Support	C2.04	Please bring your sketchbook with you.
Monday	1.45 – 2.15pm	WYT	9 and 10	GCSE Fashion and Textiles Study Support	C2.06	Please bring your sketchbook with you.
Monday	1.45 – 2.15pm	ELN	10 and 11	GCSE Art Study Support	C2.11	Please bring your sketchbook with you.
Tuesday	1.45 – 2.15pm	FSR	9 and 10	GCSE Art Study Support	C2.04	Please bring your sketchbook with you.
Tuesday	1.45 – 2.15pm	WYT	9 and 10	GCSE Fashion and Textiles Study Support	C2.06	Please bring your sketchbook with you.
Tuesday	1.45 – 2.20pm	GSS	9, 10 and 11	GCSE Art and Photography Study Support	C2.09/Art Computer Suite	Please bring your sketchbook with you.
Tuesday	3.20 – 4.20pm	CEY	10	GCSE Art and Photography Study Support	C2.10	Please bring your sketchbook with you.

Creative Arts Department						
Day	Time	Staff	Year Group	Enrichment Activity	Venue	Requirements
Wednesday	11.10 – 11.45am	FSR	9 and 10	GCSE Art Study Support	C2.04	Please bring your sketchbook with you.
Wednesday	1.45 – 2.15pm	ELN	10 and 11	GCSE Art Study Support	C2.11	Please bring your sketchbook with you.
Wednesday	3.20 – 4.40pm	GSS	9, 10, and 11	GCSE Art and Photography Study Support	C2.09/Art Computer Suite	Please bring your sketchbook with you.
Wednesday	1.45 – 2.15pm	WYT	9 and 10	GCSE Fashion and Textiles Study Support	C2.06	Please bring your sketchbook with you.
Wednesday	3.30 – 4.30pm	CEY	7, 8 and 9	Art Club	C2.11	Please come along.
Wednesday	3.20 – 4.15pm	WYT	7 and 8	Textiles Club	C2.06	Please see WYT in C2.06 to sign up.
Thursday	11.10 – 11.45am	FSR	9 and 10	GCSE Art Study Support	C2.04	Please bring your sketchbook with you.
Thursday	3.20 – 4.20pm	FSR	9 and 10	GCSE Art and Photography Study Support	C2.04	Please bring your sketchbook with you



English Department						
Day	Time	Staff	Year Group	Enrichment Activity	Venue	Requirements
Monday	1.45 – 2.20pm	Various	7, 8 and 9	Creative Writing Club	M1.13	Bring a snack and a drink!
Monday, Tuesday and Wednesday	11.10 – 11.40pm	HLD	11	GCSE Literature Poetry Revision Club	M1.06	Bring a snack and a drink!
Tuesday	1.45 – 2.20pm	NVS	9, 10, 11, 12 and 13	Moot Court Club	R0.01	Bring a snack and a drink!
Monday (Week A Only)	1.45 – 2.20pm	WTN	12 and 13	A Level English – Text on Screens	M1.11	Bring a snack and a drink!
Wednesday (Week B Only)	1.45 – 2.20pm	SPN	7, 8 and 9	Key Stage 3 Comic Book Club	M1.09	Bring a snack and a drink!

Equality and Diversity Department						
Day	Time	Staff	Year Group	Enrichment Activity	Venue	Requirements
Thursday (Week A Only)	1.45 – 2.20pm	BLL	All Years	Equality Ambassadors	D0.05	Bring your lunch



Design and Technology and Food Technology Department						
Day	Time	Staff	Year Group	Enrichment Activity	Venue	Requirements
Thursday	11.10 – 11.45pm	SBN	11 GCSE Design and Technology Students	Design and Technology Examination Preparation	M2.03	Bring a snack and drink
Tuesday	3.20 – 4.30pm	SBN	11 GCSE Design and Technology Students	Design and Technology Examination Preparation	M2.03	Bring a snack and drink
Wednesday	1.45 – 2.20pm	NCL and NTY	11 Good Technology Students	NEA Catch Up Session	Food Prep Rooms	Bring a snack and drink
Thursday	11.10 – 11.45pm	SBN	11 GCSE Design and Technology Students	Design and Technology Examination Preparation	M2.03	Bring a snack and drink
Thursday	3.20 – 4.30pm	SBN	11 GCSE Design and Technology Students	Design and Technology Examination Preparation	M2.03	Bring a snack and drink
Friday	1.45 – 2.20pm	SFD	11 GCSE Design and Technology Students	NEA Booster Session	M2.03	Bring a snack and drink

History						
Day	Time	Staff	Year Group	Enrichment Activity	Venue	Requirements
Wednesday	1.45 – 2.20pm	BLH	11	Year 11 Revision Session	C3.01	Bring a snack and drink
Thursday	1.45 – 2.20pm	TMN	13	Year 13 History Revision	B4.08	N/A
Friday Week A	11.10 – 11.45am	BLH	13	US Politics Revision	C3.01	Bring a snack and drink
Friday Week B	1.45 – 2.20pm	WTE	13	US Politics Revision	C4.06	Bring a snack and drink

Human Sciences Department

Day	Time	Staff	Year Group	Enrichment Activity	Venue	Requirements
Monday	11.10 – 11.45am	BTN	7, 8 and 9	Sociology Club	B1.01	N/A
Thursday (Week B Only)	11.20 – 11.40pm	BRK	11	GCSE Sociology Support Drop In	D0.06	Bring your book and lunch

Geography Department

Day	Time	Staff	Year Group	Enrichment Activity	Venue	Requirements
Monday	1.45 – 2.20pm	HGT	7 and 8	Geography Film Club	C4.08	You may bring your lunch
Thursday	11.10 – 11.45am	TPT	10 and 11	GCSE Geography Support Drop In	B4.05	You may bring your lunch



Languages Department						
Day	Time	Staff	Year Group	Enrichment Activity	Venue	Requirements
French						
Monday	1.45 – 2.15pm	MPY and MSN	11	French Revision	C2.01	Bring a snack and drink
Tuesday	3.30 - 4.15pm	MSN	12 and 13	French Grammar/Speaking Skills	B3.09	Bring a snack and drink
Wednesday	1.45 – 2.15pm	MSN	11	Year 11 Speaking French	B2.08	Bring a snack and drink
Thursday	3.30 - 4.15pm	MSN	11	Year 11 Speaking French	B3.09	Bring a snack and drink
Thursday Week A	3.30 – 4.15pm	AKY	7	Key Stage 3 Culture Club	B2.07	Bring a snack and drink
Thursday Week B	3.30 – 4.15pm	AKY	8 and 9	Key Stage 3 Culture Club	B2.07	Bring a snack and drink
Spanish						
Monday	1.45 – 2.15pm	MPY and MSN	11	Spanish Revision	C2.01	Bring a snack and drink
Tuesday	3.30 – 4.15pm	MPY and CAS	11	Spanish Speaking skills	B2.06	Bring a snack and drink
Wednesday	3.30 – 4.15pm	MPY and CAS	12 and 13	Spanish Grammar/Speaking skills	B2.06	Bring a snack and drink
Wednesday	3.30 – 4.15pm	AVY	10 and 11	Key Stage 4 Culture Club	C2.01	Bring a snack and drink
Thursday Week A	3.30 – 4.15pm	FRZ	7	Key Stage 3 Culture Club	B2.09	Bring a snack and drink
Thursday Week B	3.30 – 4.15pm	FRZ	8 and 9	Key Stage 3 Culture Club	B2.09	Bring a snack and drink
German						
Friday	3.30 - 4.30pm	MSN	10, 11, 12 and 13	German International Award	C2.01	Bring a snack and drink

Mathematics Department

Day	Time	Staff	Year Group	Enrichment Activity	Venue	Requirements
Everyday	11.10 - 11.45am	Mathematics Teachers	7, 8, 9, and 10	Mathematics Surgery	H1.04	N/A
Tuesday	1.45 - 2.15pm	SSN	All Years	Chess Club	H1.01 and H1.02	N/A
Wednesday	1.45 - 2.15pm	TNR	12	Mathematics Challenges	H2.03	N/A

Performing Arts: Dance

Day	Time	Staff	Year Group	Enrichment Activity	Venue	Requirements
Monday	3.30 - 5.00pm	HDY	10, 11, 12 and 13	Musical Theatre Group	Performance Hall	
Tuesday	3.30 - 4.30pm	MTN	7, 8, 9, 10 and 11	Dance Training for all	Studio 2	PE or Dance Kit
Tuesday	3.30 - 4.30pm	MTN	Selected	Dance Leadership Qualification	Studio 2	PE or Dance Kit
Tuesday	3.30 - 4.30pm	MTN	10, 11, 12 and 13	GCSE and A Level Dance Coursework	Studio 1	PE or Dance Kit
Thursday	3.30 - 4.30pm	GDN	10, 11, 12 and 13	GCSE and A Level Dance Coursework	Studio 2	PE or Dance Kit
Thursday	4.30 - 6.30pm	RDY	10, 11, 12 and 13	GCSE and A Level Dance Coursework	Dining Hall	PE or Dance Kit
Friday	1.45 - 2.15pm	GDN	10, 11, 12 and 13	GCSE and A Level Dance Theory	C3.09	PE or Dance Kit
Friday	3.30 - 4.30pm	GDN	11 and 13	GCSE and A Level Dance Coursework	Peverall Hall	PE or Dance Kit
Friday	3.30 - 4.30pm	GDN	Selected Students	Elite Dance Squad	Studio 1 and 2	PE or Dance Kit



Performing Arts: Drama and Theatre						
Day	Time	Staff	Year Group	Enrichment Activity	Venue	Requirements
Monday	1.45 – 2.15pm	HDY	7, 8 and 9	Junior Musical Theatre Group (JMTG)	C3.07	
Monday	3.20 – 5.00pm	HDY and WHN	10, 11, 12 and 13	Musical Theatre Group (MTG)	Performance Hall	
Tuesday	3.30 – 5.00pm	LEN and ELS	10, 11, 12 and 13	Spotlight Theatre Company	C3.08	No skirts or dresses. Clothes, and footwear are required to move in.
Tuesday	3.30 – 5.00pm	WHN	All Year Groups	Technical Theatre Group	Performance Hall and C3.09	Email: swhitehorn@ivybridge.devon.sch.uk
Wednesday	3.30 – 4.30pm	LDN and ELS	10 and 11	GCSE Drama Support	C3.08 and C3.09	Resources as required
Thursday	3.30 – 4.30pm	LDN	10	GCSE Guided Rehearsal and Coursework Support	C3.08	Resources as required



Performing Arts: Music						
Day	Time	Staff	Year Group	Enrichment Activity	Venue	Requirements
Monday	1.45 - 2.15pm	PYA	10 – 11	GCSE Music Coursework Support	C3.06	Check with PYA in advance
Monday	1.45 - 2.15pm	HDY	7 – 9	Junior Musical Theatre Group	C3.07	N/A
Monday	3.30 - 4.30pm	HDY	9 – 13	Musical Theatre Group	Performance Hall	N.A
Monday	3.30 - 4.15pm	R Hamer and R Alexander	All Year Groups	Jam Slam (Beginner lessons for singers, keyboard players, guitarists, bass guitarists and drummers)	C3.07, C3.05 and the Drum Hut	Book your place: https://www.ticketsource.co.uk/ivybridge-music-centre
Monday	4.15 - 5.00pm	STN, R Hamer R Alexander	Primary Students	Jam Slam (Beginner lessons for singers, keyboard players, guitarists, bass guitarists and drummers)	C3.07, C3.05 and the Drum Hut	Book your place: https://www.ticketsource.co.uk/ivybridge-music-centre
Monday	5.00 - 5.45pm	STN, R Hamer R Alexander	Primary Students	Jam Slam (Beginner lessons for singers, keyboard players, guitarists, bass guitarists and drummers)	C3.07, C3.05 and the Drum Hut	Book your place: https://www.ticketsource.co.uk/ivybridge-music-centre
Monday (alternate weeks)	7.00 - 8.30pm	G Carter WHN	Musicians Grade 4 and above	Ivybridge Community Big Band (Students, ex-students, staff and the community)	Performance Hall	Bring your instrument
Tuesday	11.10 - 11.40am	R Hamer	All Year Groups	Guitar Club	C3.07	Bring your instrument if you have one or just turn up
Tuesday (September – January)	3.30 - 4.00pm	V Touret	All Year Groups	Kick Start Trombone (Learn Trombone from scratch)	C3.05	Book your place: https://www.ticketsource.co.uk/ivybridge-music-centre

Performing Arts: Music						
Day	Time	Staff	Year Group	Enrichment Activity	Venue	Requirements
Tuesday (September – January)	3.30 – 4.00pm	H Duff	All Year Groups	Kick-Start Cello (Learn Cello from scratch)	C3.07	Book your place: https://www.ticketsource.co.uk/ivybridge-music-centre
Wednesday (Week B only)	11.10 – 11.40am	PYA	All Year Groups (Existing student group)	Music Ambassadors	C3.06	No Requirements
Wednesday (as required)	1.45 – 2.15pm	T Deam S Seymour S Massey	All Year Groups	Extra Ensemble Rehearsals String, Woodwind, Brass groups as required	C3.05 C3.06 C3.07	Bring your instrument
Wednesday	3.20 – 4.00pm	T Deam	All Year Groups	String Ensemble	C3.09	Bring your instrument
Wednesday	3.20 – 4.00pm	S Seymour	All Year Groups	Woodwind Ensemble	C3.07	Bring your instrument
Wednesday	3.20 – 4.00pm	S Massey	All Year Groups	Brass Ensemble	C3.06	Bring your instrument
Wednesday	4.00 – 5.00pm	STN	Primary	Junior Orchestra	Performance Hall	Bring your instrument
Wednesday	4.00 – 5.00pm	S Massey	All Year Groups	Chamber Orchestra	C3.08 or Dining Hall	Bring your instrument
Wednesday	4.00 – 6.30pm	STN T Deam S Seymour S Massey	Primary Years 4, 5 and 6	Primary Music Centre Orchestral instruments group tuition and musicianship	C3.05 C3.06 C3.07 C3.09	Book your place: https://www.ticketsource.co.uk/ivybridge-music-centre
Thursday	11.10 – 11.40am	P Berthoud	All Year Groups	Ukulele Group	C3.05	Bring your Ukulele if you have one. You can borrow one too!
Thursday	1.45 – 2.15pm	M Berthoud	All Year Groups	Busking (This is for singers of any standard as well as acoustic instrumentalists)	C3.05	Bring your instrument if you have one
Thursday (Week A only)	1.45 – 2.15pm	PYA	10 – 11	GCSE Music Coursework Support	C3.06	Check with PYA in advance

Performing Arts: Music						
Day	Time	Staff	Year Group	Enrichment Activity	Venue	Requirements
Friday	1.45 – 2.15pm	R Le Caz	All Year Groups	Pop Vocals	C3.07	
Friday	1.45 – 2.15pm	STN	11	GCSE Music Coursework Support	Recording Studio	Check with PYA/STN in advance
Friday	3.30 – 4.30pm	STN	All	Jam Slam – Rehearsal Sessions	C3.05 C3.07	Check with STN in advance
Various as required	Various as required	WBR	All	ABRSM/Trinity Aural and Theory	TBC	Email to book: mwebber@ivybrid ge.devon.sch.uk



Science Department						
Day	Time	Staff	Year Group	Enrichment Activity	Venue	Requirements
Tuesday	1.45 - 2.15pm	WGT	12	Biology Support Sessions	B2.02	N/A
Tuesday	3.30 – 4.30pm	BRY and Various Staff	11	Physics Support Sessions	D2.01	N/A
Wednesday Week A	3.30 – 4.15pm	PAR	11	Chemistry	B4.01	N/A
Wednesday Week A	3.30 – 4.15pm	SHW	12	Chemistry	B3.01	N/A
Wednesday Week B	3.30 – 4.15pm	PAR	12	Chemistry	B4.01	N/A
Wednesday Week B	3.30 – 4.15pm	SHW	11	Chemistry	B3.01	N/A
Wednesday	3.30 – 4.30pm	JWL	All Years	Girls Green Power Electric Car Club	D3.04	N/A
Wednesday	3.30 – 4.30pm	BRY	12 and 13	Physics Support Sessions	D2.01	N/A
Thursday	3.30 – 4.15pm	STB	13	Chemistry Support Sessions	B3.03	N/A
Friday	1.45 – 2.20pm	LYL	12 and 13	Biology Support Sessions	D1.03	N/A



Other Enrichment Opportunities						
Book Club						
Day	Time	Staff	Year Group	Enrichment Activity	Venue	Requirements
Monday	3.20 – 4.20pm	Sara Hull	All Years	Book Club 'Reading Challenge'	LRC	N/A
Christian Club						
Day	Time	Staff	Year Group	Enrichment Activity	Venue	Requirements
Wednesday	1.45 – 2.20pm	Elis Norton	All Years	Rock Solid Christian Club	C4.05	Bring your lunch
Crochet and Knitting Club						
Day	Time	Staff	Year Group	Enrichment Activity	Venue	Requirements
Wednesday	3.30 – 4.30pm	Miss Davidson and MSH	All Years	Crochet and Knitting Club	N2.02	N/A
Sustainability Group						
Day	Time	Staff	Year Group	Enrichment Activity	Venue	Requirements
Thursday	3.15 – 4.00pm	SCM	All Years	Sustainability Group	B2.05	N/A



Physical Education, Physical Activity and Sport

Physical Education Department						
Day	Time	Staff	Year Group	Enrichment Activity	Venue	Requirements
Cricket						
Friday (Week A)	1.45 – 2.15pm	BDE	7 and 8	Cricket Club	Sports Hall	PE Kit or Trainers
Friday (Week B)	1.45 – 2.15pm	BDE	9, 10 and 11	Cricket Club	Sports Hall	PE Kit or Trainers
Endurance Running						
Friday	3.30 – 4.15pm	MTN and JMS	All Years	Endurance Running Club	Meet in the Sports Hall	PE Kit
Fitness Suite						
Wednesday	3.30 – 4.15pm	PPT	All Years	Fitness	Fitness Suite	PE Kit
Rowing						
Wednesday	3.30 – 4.30pm	PPT	All Years	Rowing	AW1	PE Kit
Table Tennis						
Wednesday	3.30 – 4.30pm	JMS	All Years	Table Tennis Club	Sports Hall or Top Tables	PE Kit
Tennis						
Wednesday	3.30 – 4.30pm	JKN	All Years	Tennis Club	Tennis Courts	PE Kit
Volleyball						
Tuesday	7.30 - 8.30am	HTT	10, 11, 12 and 13	Senior Volleyball Club	Sports Hall/AW2	PE Kit
Wednesday	7.30 - 8.30am	HTT	10, 11, 12 and 13	Senior Volleyball Club	Sports Hall/AW2	PE Kit
Thursday	3.30 - 4.30pm	HTT	7, 8 and 9	Junior Volleyball Club	Sports Hall/AW2	PE Kit
Friday	3.30 - 4.30pm	HTT	10, 11, 12 and 13	Senior Volleyball Club	Sports Hall/AW2	PE Kit

Sports Academy

Our vision is to give every child, from primary to Sixth Form and from participation to elite level, the opportunity to develop their athletic ability, improve the level of skill in their chosen sport(s) and reach their performance potential. We will do this by providing access to excellent teaching and coaching, support and specialist sports provision alongside their academic commitments.

We have changed the names of our leading sports groups from 'Academy' to '**Elite Squads**'. Our highest-level athletes in each Sport Academy will now, therefore, be in the Elite Football Squad, Elite Gymnastics Squad, Elite Netball Squad and Elite Rugby Squad.

The **Development Squads** are **open to all** students at Ivybridge. The primary purpose of the Development Squad is participation, with the related goals of improved physical fitness, fun, and social involvement. Students participating in the Development Squads will have the opportunity to be selected for the **Elite Squads**.

Sports Academy						
Football Academy						
Day	Time	Staff	Year Group	Enrichment Activity	Venue	Requirements
Monday	3.30 – 4.30pm	LND and DS	7	Development Squad (Boys and Girls)	AW1	PE or Academy Kit
Monday	3.30 – 4.30pm	LND and DS	7	Elite Squad (A Team) (Boys and Girls)	AW1	PE or Academy Kit
Tuesday	3.30 – 4.30pm	LND and JMS	8	Development Squad (Boys and Girls)	AW1	PE or Academy Kit
Tuesday	3.30 – 4.30pm	LND and JMS	8	Elite Squad (A Team) (Boys and Girls)	AW1	PE or Academy Kit
Wednesday	3.30 – 4.30pm	LND and JNN	All Years	Development Squad (Girls only)	AW1	PE or Academy Kit
Wednesday	3.30 – 4.30pm	LND and JNN	All Years	Elite Squad (Girls only)	AW1	PE or Academy Kit
Wednesday	3.30 – 4.30pm	LND and JKN	10	Development Squad (Boys only)	AW1	PE or Academy Kit
Wednesday	3.30 – 4.30pm	LND and JKN	10	Elite Squad (A Team) (Boys only)	AW1	PE or Academy Kit

Sports Academy

Football Academy

Day	Time	Staff	Year Group	Enrichment Activity	Venue	Requirements
Thursday	3.30 – 4.30pm	LND and WNE	9, 11, 12 and 13	Development Squad (Boys only)	AW1	PE or Academy Kit
Thursday	3.30 – 4.30pm	LND and WNE	9, 11, 12 and 13	Elite Squad (A Team) (Boys only)	AW1	PE or Academy Kit

Gymnastics Academy

Day	Time	Staff	Year Group	Enrichment Activity	Venue	Requirements
Tuesday	3.30 – 5.00pm	RDY, SDS, BKL, LD	All Years	Elite Squads	Gymnasium	PE or Academy Kit
Tuesday	5.00 – 6.00pm	RDY, SDS, BKL, LD	All Years	Elite Squads – Acrobatics	Gymnasium	PE or Academy Kit
Thursday	3.30 – 5.00pm	RDY, SDS, EB	All Years	Elite Squads	Gymnasium	PE or Academy Kit
Friday	3.30 – 4.30pm	SDS	All Years	Development Squad (Boys and Girls)	Gymnasium	PE or Academy Kit

Netball Academy

Day	Time	Staff	Year Group	Enrichment Activity	Venue	Requirements
Tuesday	3.30 – 4.30pm	PPT and JNN	7	Development Squad Training	Tarmac	PE or Academy Kit
Tuesday	3.30 – 4.30pm	PPT and JNN	7	Elite Squad Training		PE or Academy Kit
Tuesday	3.30 – 4.30pm	MTL	10, 11, 12, 13	Elite Squad Training	Sports Hall	PE or Academy Kit
Wednesday	3.30 – 4.30pm	DNT and MTL	8, 9, 10 and 11	Development Squad Training	Sports Hall	PE or Academy Kit
Wednesday	3.30 – 4.30pm	DNT and MTL	8 and 9	Elite Squad Training	Sports Hall	PE or Academy Kit

Rugby Academy

Day	Time	Staff	Year Group	Enrichment Activity	Venue	Requirements
Monday	3.30 – 4.30pm	JVS, GM, and NCT	9 and 10	Development Squad Training (Boys Only)	Rugby Pitch	PE or Academy Kit

Rugby Academy						
Day	Time	Staff	Year Group	Enrichment Activity	Venue	Requirements
Monday	3.30 – 4.30pm	JVS, GM, and NCT	9 and 10	Elite Squad Training (Boys Only)	Rugby Pitch	PE or Academy Kit
Tuesday	3.30 – 4.30pm	JVS, GM, and NCT	Senior Elite Squad 11, 12, and 13	Development Squad Training (Boys Only)	Rugby Pitch	PE or Academy Kit
Tuesday	3.30 – 4.30pm	JVS, GM, and NCT	Senior Elite Squad 11, 12, and 13	Elite Squad Training (Boys Only)	Rugby Pitch	PE or Academy Kit
Tuesday	3.30 – 4.30pm	KWL, HRD and GM	All Years	Development Squad (Girls Only)	Rugby Pitch	PE or Academy Kit
Tuesday	3.30 – 4.30pm	KWL, HRD and GM	All Years	Elite Squad Training (Girls Only)	Rugby Pitch	PE or Academy Kit
Thursday	3.30 – 4.30pm	JVS, and GM	7 and 8	Development Squad (Boys Only)	Rugby Pitch	PE or Academy Kit
Thursday	3.30 – 4.30pm	JVS, and GM	7 and 8	Elite Squad Training (Boys Only)	Rugby Pitch	PE or Academy Kit
Thursday	3.30 – 4.30pm	KWL, HRD and NCT	All Years	Development Squad (Girls Only)	AW2	PE or Academy Kit
Thursday	3.30 – 4.30pm	KWL, HRD and NCT	All Years	Elite Squad Training (Girls Only)	AW2	PE or Academy Kit
Friday	3.30 – 4.30pm	JVS, GM, and NCT	Senior Elite Squad 11, 12, and 13	Development Squad Training (Boys Only)	Rugby Pitch	PE or Academy Kit
Friday	3.30 – 4.30pm	JVS, GM, and NCT	Senior Elite Squad 11, 12, and 13	Elite Squad Training (Boys Only)	Rugby Pitch	PE or Academy Kit



Elite Squad and Elite Talent Programme – Strength and Conditioning – Early Morning						
Day	Time	Staff	Year Group	Enrichment Activity	Venue	Requirements
Monday	8.00 – 8.45am	JVS and GM	10, 11, and 12	Elite Rugby Squad	Studio 3	PE or Academy Kit
Tuesday	8.00 – 8.45am	JVS and GM	10, 11, and 12	Elite Rugby Squad	Studio 3	PE or Academy Kit
Thursday	8.00 – 8.45am	JVS and GM	10, 11, and 12	Elite Rugby Squad	Studio 3	PE or Academy Kit
Thursday	8.00 – 8.45am	JVS and GM	All Years	All Elite Squads and Talent Programme (Boys and Girls)	Studio 3	PE or Academy Kit
Friday	8.00 – 8.45am	JVS and GM	10, 11, and 12	Elite Rugby Squad	Studio 3	PE or Academy Kit



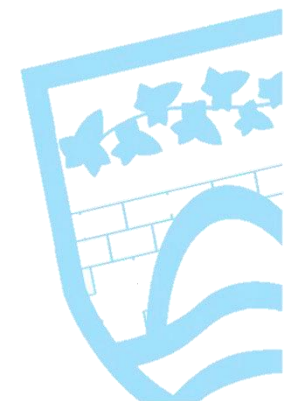
Student Leisure Enrichment Time

Student Leisure Time is a programme of activities that students engage in during their break and lunchtimes at the College. Students may participate in these sessions for reasons such as relaxation, competition or personal development. The sessions are not structured or skill based, as the focus is on student participation and enjoyment. Staff will be present at all times for Student Leisure Time. Please see the requirements for each leisure opportunity with regard to footwear and PE kit. In some activities, students are allowed to remain in College uniform and simply change their footwear.

Physical Education Department						
Leisure Football – Please bring your own equipment to the sessions						
Day	Time	Staff	Year Group	Enrichment Activity	Venue	Requirements
Monday	11.10 – 11.40am	JMS	All Years	Football	AW1	Moulded Studs
Monday	1.45 – 2.10pm	LND	All Years	Football	AW1	Moulded Studs
Tuesday	11.10 – 11.40am	LND and JNN	All Years	Football	AW1	Moulded Studs
Tuesday	1.45 – 2.10pm	JKN	All Years	Football	AW1	Moulded Studs
Wednesday	11.10 – 11.40am	MTN	All Years	Football	AW1	Moulded Studs
Wednesday	1.45 – 2.10pm	LND	All Years	Football	AW1	Moulded Studs
Thursday (Week A Only)	11.10 – 11.40am	JNN	All Years	Football	AW1	Moulded Studs
Thursday (Week B Only)	1.45 – 2.10pm	NCT	All Years	Football	AW1	Moulded Studs

Physical Education Department						
Leisure Football						
Friday	1.45 – 2.10pm	LND	All Years	Football	AW1	Moulded Studs
Leisure Gymnastics						
Day	Time	Staff	Year Group	Enrichment Activity	Venue	Requirements
Tuesday A	1.45 – 2.15pm	SDS	All Years	Bouncing for Fun! Trampets and Tumbling	Gymnasium	PE Kit or Academy Kit
Friday A	1.45 – 2.15pm	SDS	All Years	Vaulting and Free G	Gymnasium	PE Kit or Academy Kit
Tuesday B	1.45 – 2.15pm	SDS	All Years	Bouncing for Fun! Trampets and Tumbling	Gymnasium	PE Kit or Academy Kit
Friday B	1.45 – 2.15pm	SDS	All Years	Vaulting and Free G	Gymnasium	PE Kit or Academy Kit
Leisure Rugby						
Day	Time	Staff	Year Group	Enrichment Activity	Venue	Requirements
Monday	11.10 – 11.40am	JVS and GM	All Years	Rugby and Ball Games	AW2	Moulded Studs or Trainers
Wednesday	11.10 – 11.40am	JVS and GM	All Years	Rugby and Ball Games	AW2	Moulded Studs or Trainers
Thursday	11.10 – 11.40am	JVS and GM	All Years	Rugby and Ball Games	AW2	Moulded Studs or Trainers
Leisure in the Sports Hall						
Day	Time	Staff	Year Group	Enrichment Activity	Venue	Requirements
Monday	11.10 – 11.40am	HTT	7, 8 and 9	Badminton	Sports Hall	Trainers
Monday	1.45 – 2.10pm	DNT	10 and 11	Badminton	Sports Hall	Trainers
Tuesday	11.10 – 11.40am	NCT	7, 8 and 9	Badminton	Sports Hall	Trainers
Tuesday	11.45 – 2.10pm	PPT	10 and 11	Badminton	Sports Hall	Trainers

Leisure in the Sports Hall						
Day	Time	Staff	Year Group	Enrichment Activity	Venue	Requirements
Wednesday (Week B Only)	11.10 – 11.40am	MTL	12 and 13	Badminton	Sports Hall	Trainers
Wednesday (Week A Only)	1.45 – 2.10pm	MTL	12 and 13	Badminton	Sports Hall	Trainers
Thursday	11.10 – 11.40am	L. Spampanato	7, 8 and 9	Badminton	Sports Hall	Trainers
Thursday	1.45 – 2.10pm	PPT	GCSE	Badminton	Sports Hall	Trainers
Friday	11.10 – 11.40am	L. Spampanato	7, 8 and 9	Badminton	Sports Hall	Trainers
Friday	1.45 – 2.10pm	BDE	All Years	Cricket	Sports Hall	Trainers



Primary Enrichment

Our aim is to develop the primary sports provision at the College. Please find the information required for the Primary Provision we have in place at the College.

Primary Art Academy					
Day	Time	Staff	Enrichment Activity	Venue	Requirements
Tuesday	3.45 – 4.45pm	FSR	Year 5 Art Workshops	C2.08	N/A

Primary Football Academy					
Day	Time	Staff	Enrichment Activity	Venue	Requirements
Monday	4.00 – 5.00pm	CW and LD	Year 5 and 6 Primary Football Academy (Boys and Girls)	AW2	Moulded Studs or Trainers
Monday	5.00 – 6.00pm	CW and LD	Year 5 and 6 Primary Football Wild Cats (Girls Only)	AW2	Moulded Studs or Trainers



Primary Gymnastics Academy					
Day	Time	Staff	Enrichment Activity	Venue	Requirements
Monday	4.00 – 5.00pm	Leaders	Primary 5+ Squad	Gymnasium	PE or Academy Kit
Monday	4.00 – 5.00pm	Leaders	Primary 8+ Squad	Gymnasium	PE or Academy Kit
Monday	4.00 – 6.00pm	SDS and LD	Primary Elite Squad	Gymnasium	PE or Academy Kit
Monday	5.00 – 6.00pm	Leaders	Primary 5+ Squad	Gymnasium	PE or Academy Kit
Monday	5.00 – 6.00pm	Leaders	Primary 8+ Squad	Gymnasium	PE or Academy Kit
Wednesday	4.00 – 5.00pm	Leaders	Gym Crazy Squad	Gymnasium	PE or Academy Kit
Wednesday	4.00 – 5.00pm	Leaders	Primary 5+ Squad	Gymnasium	PE or Academy Kit
Wednesday	4.00 – 5.00pm	Leaders	Primary 8+ Squad	Gymnasium	PE or Academy Kit
Wednesday	4.00 – 5.30pm	MTN	Development 5+ Squad	Gymnasium	PE or Academy Kit
Thursday	5.15 – 6.45pm	Leaders	Development 8+ Squad	Gymnasium	PE or Academy Kit

Primary Performing Arts					
Day	Time	Staff	Enrichment Activity	Venue	Requirements
Monday	3.30 – 4.15pm	STN R Hamer R Alexander	Jam Slam (Learn a rock and pop instrument)	Music	Sign up: https://www.ticketsource.co.uk/ivybridge-music-centre
Wednesday	4.00 – 5.00pm	H Stephenson	Junior Orchestra	Performance Hall	FREE Bring your instrument
Wednesday	4.00 – 6.30pm	STN T Deam S Seymour S Massey	Primary Music Centre (Years 4 to 6)	Music	Sign up: https://www.ticketsource.co.uk/ivybridge-music-centre



Community Enrichment at Ivybridge Community College

The following groups/sessions take place at the College. Simply turn up at the venue for the right time!

Community Enrichment						
Day	Time	Staff	Group	Enrichment Activity	Venue	Requirements/Cost
Monday (alternate)	7.00 - 8.30pm	G Carter WHN	Musicians Grade 4 and above	Ivybridge Community Big Band (students, ex-students, staff, and the community are invited to join)	C3.07	FREE Bring your instrument
Monday	6.30 - 7.30pm	Nicholas Goodliffe	Girls and Women's team	Cornwood Cricket Club Women's and Girls teams	Sports Hall	Email cornwoodcc@live.com
Monday	7.00 - 7.45pm	Lydia Dodds	Age 16+	Bodyweight Circuit	Studio 1	£3.50 £2 for Staff
Tuesday	6.30 - 7.30pm	External	Age 16+	Clubbercise	Studio 1	Speak to Mr Warren in Community Sports
Wednesday	6.00 - 6.45pm	Lydia Dodds	Age 16+	Legs, Bums and Tums	Studio 1	£3.50 £2 for Staff
Wednesday	6.50 - 7.20pm	Lydia Dodds	Age 16+	Stretch and Mobility	Studio 1	£3.50 £2 for Staff
Thursday	5.45 – 6.45pm	Keith Reed	Age 8-11	Erme Valley Harriers	Sports Hall	Speak to Mr Warren in Community Sports or just come along
Thursday	7.00 - 8.00pm	Keith Reed	Age 12+	Erme Valley Harriers	Sports Hall	Speak to Mr Warren in Community Sports or just come along
Thursday	8.00 – 9.30pm	Alan Spencer	N/A	Ivybridge Table Tennis Club	Sports Hall	Email IvybridgeTTC@aol.com
Friday	6.00 - 6.45pm	Lydia Dodds	Age 16+	Dance Aerobics	Studio 1	£3.50 £2 for Staff

External Enrichment Opportunities
Cadet Training – Police Cadets



IVYBRIDGE
VOLUNTEER POLICE CADETS

RECRUITING NOW!

Ages 13-17



- Make new friends
- Build your confidence
- Learn key life skills
- First Aid
- Volunteer in your community
- Much more!

Any queries? Please email: dc.police.uk

RECRUITING NOW:
www.vpc.police.uk/be-a-cadet

Cadet Training – Royal Air force

 **ROYAL
AIR FORCE**
AIR CADETS
the next generation

RECRUITING NOW!

Contact the Squadron
on the details below!



339 (South Dartmoor)

AIR TRAINING CORPS

We are recruiting now. Join our next intake night. This is the best opportunity to see what we do and join. Next intake:

adj.339@rafac.mod.gov.uk

There are many activities you can do as a member of 339 (South Dartmoor) Squadron, including:

- Flying and Gliding • Duke of Edinburgh's Award
- Adventure Training • Target Shooting
- Leadership Training • Sports • BTEC's • First Aid Training, and more!

You need to be at least school **year 8 and under 17** years of age to join as a cadet and over 20 to join as staff and it costs only £10 per month.

Ivybridge Cadet Centre www.339sqn.org.uk
Godwell Ln, Ivybridge oc.339@rafac.mod.gov.uk
PL21 0LE

339sqn.org.uk



Cadet Training – Sea Cadets



ADVENTURE

that launches you for life today

**SEA
CADETS**
Plymouth (Drake)

Cadet Training – Sea Cadets



UNLEASH YOUR POTENTIAL

Become the person you want to be – have fun on a different kind of adventure

While you're doing this:

Orienteering across Dartmoor, rock-climbing, rowing, competing in national competitions, parading with a band, first aid, engineering, even meteorology and powerboating.

Go offshore and experience the most exhilarating and unique challenges. Whether it's hoisting the sail of a yacht as part of a crew or navigating in a powered craft, nothing compares to the feeling of being out at sea.

Take on challenging nautical training and pull together with other cadets to safely navigate Britain's coastline.

You'll get all this:

You'll become confident in new situations. Feel more in charge of yourself and know how to make a good impression.

In turn, you'll learn how to support people who are less experienced than you, which you can use to captain a sports team and stand out in interviews.

Cadet Training – Sea Cadets



MAKE WAVES

It doesn't matter if you've never been on a boat before, Sea Cadets gives you all the training and support you need to be part of an incredible experience. Get out on the water and hoist the sail of a yacht or learn how to navigate a power vessel.

"My confidence has increased so much through meeting new people and all the skills I've gained, which will come in really useful later in life."

Tyler, 14

Cadet Training – Sea Cadets

WHEN CAN YOU JOIN?

Sea Cadets: Ages 12 - 18

Royal Marines Cadets: Ages 13 - 18

Junior Sea Cadets: Ages 10 - 12

WHAT DOES IT COST?

Subs:

Sea Cadets: £20 pm

Royal Marines Cadets: £20 pm

Junior Sea Cadets: £10 pm



“At Plymouth (Drake) we aim to give young people an experience that will help them grow in to the person they want to be in a safe enviroment”

- Commanding Officer - Plymouth (Drake)

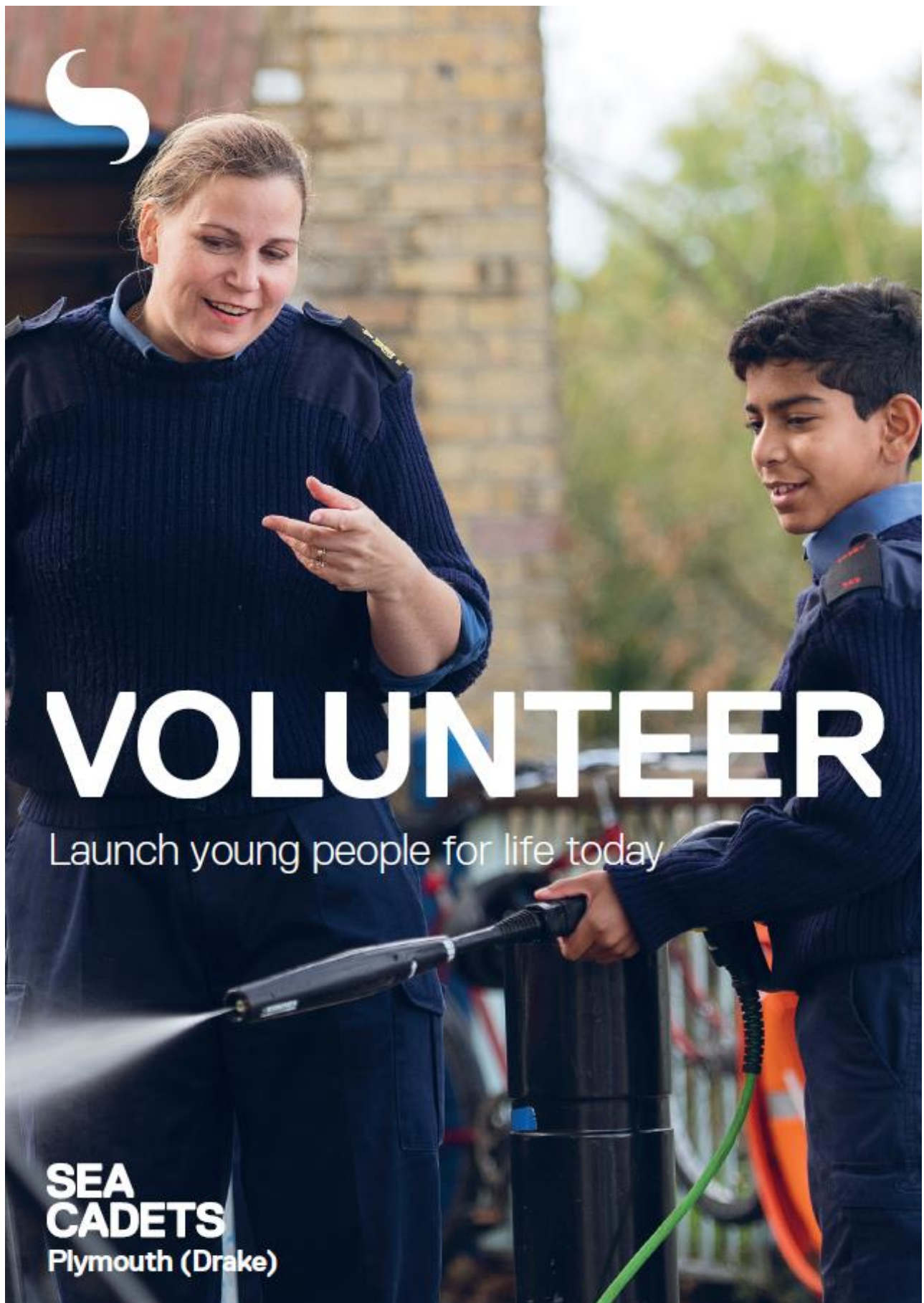
JOIN US

Email: admin-plymouth@cadetmail.mod.uk



Charity Registration No. 300942

Cadet Training – Sea Cadets



VOLUNTEER

Launch young people for life today

**SEA
CADETS**
Plymouth (Drake)

Cadet Training – Sea Cadets



THINK OUTSIDE THE BOX

Run a first aid course, help teenagers work towards nationally recognised qualifications such as the Duke of Edinburgh's Award or take a group of cadets on an overseas experience.

Football, marketing, IT, first aid, engineering – whatever your interest in life you could bring it to your local unit. Sea Cadets offers so much more than you could imagine.

MAKE MORE OF YOUR FREE TIME

Whatever your experience and skills, they could be utilised to help young people flourish.

The sky's the limit, so why not contact your local unit for an informal chat on how you can help?

Visit our website to find your local unit:
sea-cadets.org/units

Or get in touch:

admin-plymouth@cadetmail.mod.uk

WHICH VOLUNTEER ARE YOU?

We need people who are happy to roll up their sleeves and get involved to make a positive impact on young people and their communities.

We have lots of different roles at Sea Cadets to choose from and our volunteers gain excellent, nationally recognised training and qualifications for the courses they attend.



Todd White Art Photography/Ben Fitzpatrick

These are just a few of the roles that might appeal to **you**:

BE A WATERSPORTS INSTRUCTOR

If you love being out on the water, why not share your skills with young people in your area? Spend a few hours a week showing young people how to sail, windsurf, kayak, row or canoe at a local Sea Cadets unit.

Don't be put off if you haven't got any watersport qualifications, all you need is lots of enthusiasm. We'll provide you with all the equipment and training.

JOIN THE UNIT MANAGEMENT TEAM

If you have skills in leadership, business or administration and would like to oversee a unit's operation, why not join a unit's management team?

You can help manage the finances and budgets, help fundraise for the unit, organise events, write press releases for the local media or build corporate relationships with local businesses.

JOIN SEA CADETS

Whether at sea or on land, Sea Cadets offers an environment where young people can find confidence and inspiration.

Sea Cadets broadens horizons and creates possibilities through a different kind of adventure. Working across the UK with 15,000 young people aged 10 to 18, help them develop into resilient, confident young people who can launch well in life, whatever their background.

Get involved and join the community of 9,000 people volunteering with Sea Cadets.

CONTACT

www.sea-cadets.org/plymouthdrake

Email: admin-plymouth@cadetmail.mod.uk

Crownhill Fort Road, Plymouth, PL65BX



Dance Clubs



PURPOSE-BUILT STUDIO:

Unit 94 Christian Mill
Business Park
Crownhill
Plymouth
PL6 5DS

APC STUDIOS

At APC Studios, positivity and professionalism are at the forefront of our dancers' training. Our dancers are provided with a safe and supportive environment where they can develop new dance skills and techniques they've always dreamt of perfecting, providing a fun place for their confidence to grow and their talent to flourish.



WHAT WE OFFER:

Ballet ✓

Tap ✓

Jazz ✓

Commercial ✓

Lyrical ✓

Acro ✓

INSPIRING THE FUTURE OF DANCE CREATIVES...

VISIT OUR WEBSITE
apcstudiosplymouth.co.uk



Dance Clubs

Ballaré School of Performing Arts — Dance Studios



From street dance to classical ballet, musical theatre to acrobatics... we teach it all in our custom built dance studios. Bring this leaflet in to get a FREE trial class!

www.ballaredance.co.uk

07931 515121

Dance Clubs

Dance Classes in Ivybridge

Tuesday's

MODERN, TAP & MUSICAL THEATRE

Wednesday's

STREET, JAZZ, COMMERCIAL

Thursday's

BALLET

Saturday's

PRE-SCHOOL TO YEAR 1 DANCE
CONTEMPORARY & ACRO

Dance for age 3+
Free trials for September
www.ballaredance.co.uk
#danceinivybridge

Performing Arts Clubs

CALLING ALL TALENTED TEENS!

OUR PERFORMING ARTS CLASSES ARE
YOUR TICKET TO THE BIG STAGE!

DISCOVER THE ACTOR, SINGER
OR DANCER WITHIN YOU

★ IGNITE YOUR CREATIVITY ★

★ BOOST YOUR CONFIDENCE ★

★ MAKE LIFELONG FRIENDS ★



CLASSES IN

*BALLET *TAP *JAZZ

*SINGING *DRAMA

*ACRO *MUSICAL THEATRE

*CONTEMPORARY *COMMERCIAL

*STREET DANCE *MODERN



YEARLY MUSICAL // ANNUAL SUMMER SHOW // EXAMS OPTIONAL



SJ PERFORMING ARTS PLYMOUTH

@sj_performing_arts_plymouth

www.sjperformingartsplymouth.co.uk



Youth Rangers

www.dartmoor.gov.uk/enjoy-dartmoor/dartmoor-rangers/junior-and-youth-rangers



[Home](#) > [Enjoy Dartmoor](#) > [Dartmoor Rangers](#) > [Junior and Youth Rangers](#)

Share this [f](#) [t](#) [p](#)

Enjoy Dartmoor

[Planning Your Visit](#)

[Outdoor activities](#)

[Events](#)

[Love Moor Life](#)

Junior and Youth Rangers

Do you love the great outdoors? Fancy doing something a bit different?

Become a Junior (aged 12-14 years) or Youth (aged 15-19 years) Ranger!

Dartmoor National Park established the Junior Ranger Programme in 2015. It offers people between the ages of 12-19 a chance to develop a deeper understanding and passion for Dartmoor, as well as developing practical and personal skills.

This exciting programme offers you an enjoyable way to become ambassadors for Dartmoor's very special qualities. There are tons of opportunities for learning, meeting like-minded people and having loads of outdoor fun.

SHERFORD YOUTH CLUB



**Every
Thursday at
7pm–
8.30pm**



**Follow us on
@thestationspace or
click QR code to go our
website for more info
www.spacepsm.org**

**No need to
book, come
down and say
hi!**

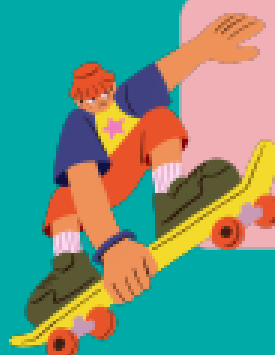
**At the Skate
Park no matter
the weather**



**Filled with
exciting
activities
every week**



**From
school yr 7
to age 19**



Tennis

FREE TENNIS

EVERY SATURDAY TERM TIME

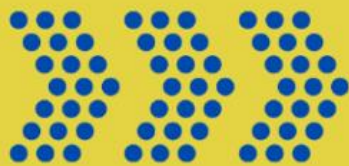
11:30 - 12:30



100% FREE
NO CATCH
NO GIMMICK
JUST TENNIS FUN

DRILLS AND FREE PLAY
RACKETS AND BALLS PROVIDED
BRING THE WHOLE FAMILY

BOOK ONLINE



SOUTH DEVON
TENNIS CENTRE



Table Tennis



Ivybridge **Table Tennis** Club

Meets Every Thursday*

Sports Hall, Ivybridge Community College

Harford Road Ivybridge, Devon [PL21 0JA](#)

Thursdays: 8:00pm until 9:30pm

Club Bats & Balls are available. New players are always welcome, we are a very friendly club. Advice, tips and coaching available as required. Suitable for all ages, and all abilities.



[Facebook - Search for Ivybridge Table Tennis Club](#)

Please Like our page to keep up to date with the latest information



[@IvybridgeTTC](#)

Please follow us to keep up with the latest Information



IvybridgeTTC@aol.com



07712896185 - (Alan Spencer, Club Secretary)



* Every Thursday Except 2 around Christmas

Music



Vocals – Keyboard – Guitar – Bass - Drums

Group tuition and band skills – Now with Arts Award!

Mondays from 25 September 2023

- 3.30 - 4.15pm: Secondary Beginner Group (years 7 to 13)
- 4.15 -5pm: Primary Beginner Group (years 5 and 6)
- 5.00 - 5.45pm: Primary Beginner Group 2 (years 5 and 6)

Less than £4 per session and free for students eligible for free school meals!

Book your place online at
www.ticketsource.co.uk/ivybridge-music-centre

#For more [info](#) please email musiccentre@ivybridge.devon.sch.uk

Already play?

Jam Slam Rehearsal Sessions

Fridays 3.30-4.30pm in C305

- Rehearsal spaces and support for bands
- Come along and meet like-minded musicians
 - Years 7 – 13.
- No booking required - turn up and play!



Music



Orchestral Music Programme

with Arts Award

Starting Wednesday, 27 September 2023
5-6pm in the Music Department

- Learn an orchestral instrument for under £4 a session!
 - For Primary students in Years 4, 5 and 6
 - Includes musicianship and Keyboard skills
 - Instruments provided in the sessions for free
 - Hire agreements available
 - Arts Award Discover included

Violin – Flute – Trumpet – Clarinet



Sign up via our online page at:

www.ticketsource.co.uk/ivybridge-music-centre.

Less than £4 per session and free for students eligible for free school meals.

For more [information](#) please email
musiccentre@ivybridge.devon.sch.uk



Music

Kick- Start



- **Affordable group tuition!**
- **Open to years 7-13**
- Instruments provided
- Season 1 – Trombone or Cello
- Season 2 – Tuba or Double Bass

Tuesdays 3.30-4pm

Limited places available!

ICC Music Department

Sign up @

<https://www.ticketsource.co.uk/ivybridge-music-centre>



devon
music
education
hub



Basketball

HIGH-FLYING BASKETBALL ACTION
LIVE FROM THE PLYMOUTH PAVILIONS



TICKETS AVAILABLE AT
PLYMOUTH CITY PATRIOTS.COM



Work Experience Opportunities

STEM Mentoring Programme for Students Monday, 26 February until Monday, 6 May 2024

STEM Learning, who work in collaboration with the Government and aim to provide world-leading STEM education for all young people, is offering **free** national online mentoring for 13 - 19 year olds interested in a career in STEM.

Participants can learn more about potential STEM careers, ask for careers advice, and consider life after school including University options, Apprenticeships, or preparing for employment.

The programme is fully funded so participation is **free** for UK students.

The next cohort of mentoring will run from Monday, 26 February until Monday, 6 May 2024.

For more information and to register, please click [here](#).

University Hospitals Plymouth NHS Trust - Project SEARCH

Students interested in a Career in Healthcare!

University Hospitals Plymouth NHS Trust has just opened applications for their **Project SEARCH Internships**.

In partnership with **City College, Plymouth, Seetec Pluss** and the **NHS**, **Project SEARCH Derriford** is an Internship Programme which offers **18-24 year olds with a diagnosed Learning Disability** and a **Plymouth Education, Health and Care Plan (EHCP)** the chance to **experience the working environment** for one year within any of the **University Hospitals Plymouth** sites.

If you are interested in finding out more, please click [here](#)



Enrichment Challenges and Fundraising

Mental Health Foundation

If you would like to take on active challenge, please visit <https://www.mentalhealth.org.uk/get-involved/active-challenges/12k-steps-challenge>

Race for Life

Join Cancer Research UK's Race for Life and help raise money for research into all 200 types of cancer. If you are interested, please go to <https://raceforlife.cancerresearchuk.org>

Mighty Hikes

The series of one-day half and full marathon hikes is in the most beautiful and unspoiled parts of the UK. Bring your family and friends together and have a fantastic day out while raising money for people living with cancer. If you are interested in the Mighty Hikes, please go to <https://mightyhikes.macmillan.org.uk>



If you have any questions regarding enrichment, please email Helen Reddy (enrichment@ivybridge.devon.sch.uk).

Thank you

Helen Reddy

Director of Enrichment and Sports Academy

