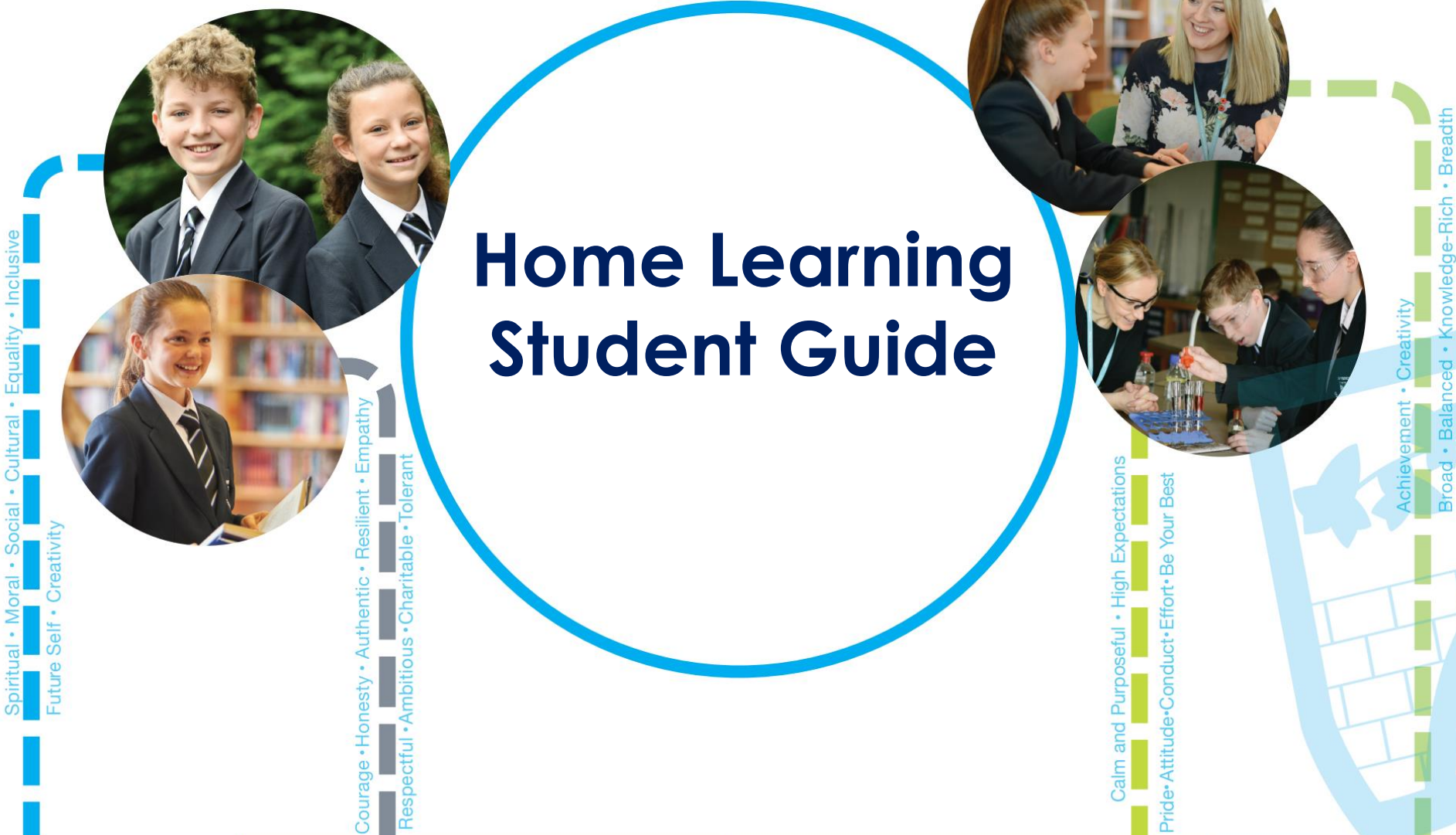


The Ivybridge Way



The Ivybridge Way

Home Learning

The purpose of Home Learning at Ivybridge Community College:

- To provide **opportunities** for students to **explore and develop their subject passions** and interests through home learning that supports and enhances the curriculum.
- To support student **endeavour** through establishing routine **independent learning habits** and use of **effective revision strategies**.
- To promote student **excellence** by developing subject specific **academic competencies and practical skills**.
- To enable outstanding **achievement** by supporting students to develop detailed **subject knowledge** and enhanced **academic literacy**.

Opportunity

Endeavour

Excellence

Achievement

Excellent
Teaching

The Purpose of Home Learning:

The core purpose of Home Learning is to support students to **consolidate** and **extend** their learning.

Academic research shows that Home Learning has a positive impact on student learning and progress when completed well, and on average adds an additional 5 months of progress during secondary school.

It is really important that Home Learning is completed to the best of your ability.

Opportunity

Endeavour

Excellence

Achievement

The Ivybridge Way

Home Learning:

There are two strands of Home Learning at Ivybridge Community College:

Subject Specific Home Learning:

Subject set tasks linked to the curriculum.

Guided Independent Home Learning:

Review of classwork and learning of core knowledge.

You will be taught specific strategies to be used during your guided independent learning time, linked to the learning and self-testing of core knowledge from your subject KITE sheets.



Excellent
Teaching

PACE

Opportunity

Endeavour

Excellence

Achievement

Independent Home Learning:

Learning the core knowledge from your KITE Learning Journals makes up some of your Guided Independent Learning time.

You should use the self-testing toolkit strategies when completing your KITE home learning including blind mind-mapping, cumulative quizzing and flashcards



Other Independent Learning tasks may include:

- Reviewing and improving your classwork
- Acting on teacher feedback to improve your work
- Carrying out wider research into a topic or subject
- Producing and using revision materials using the self-testing tool kit
- Completing practice exam questions and past papers
- Practising and developing practical skills

Opportunity

Endeavour

Excellence

Achievement

The Home Learning Programme

The Home Learning programme on the next slides and in your KITE Learning Journal gives guidance on the amount of time you should be spending on your Home Learning in each subject over a two week learning cycle.

There will be times when you will be expected to do more Home Learning, for example when preparing for key assessments, mock exams or completing coursework.

—Home Learning Programme—

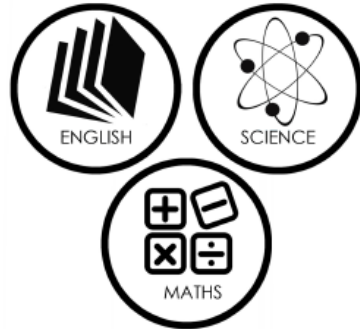
Years 7 and 8

There are 2 strands of Home Learning at Ivybridge Community College:

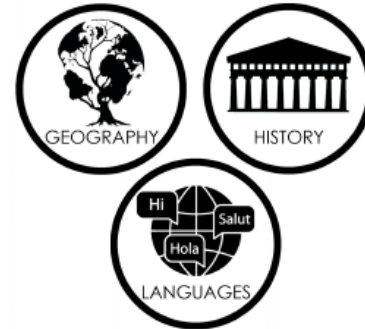
- ~ Subject specific Home Learning
- ~ Guided Independent Learning

The College operates a two week timetable and consequently over this period, students should receive the following amount of Home Learning:

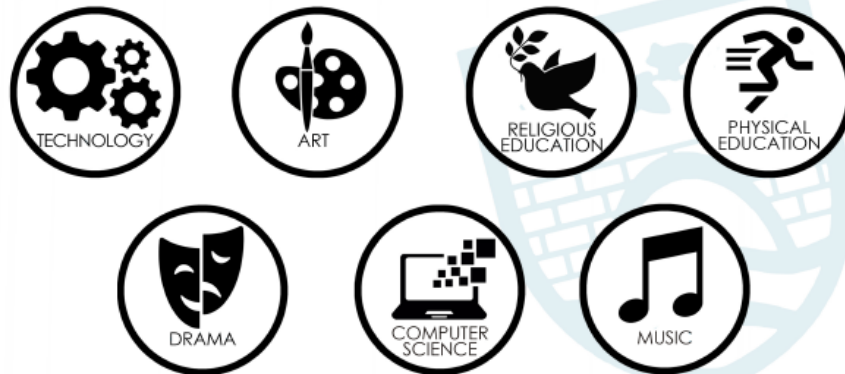
1 hour subject specific and
20 minutes Independent Learning
[KITE booklets]



40 minutes subject specific and
20 minutes Independent Learning
[KITE booklets]



20 minutes subject specific and 20 minutes Independent Learning
[KITE booklets]

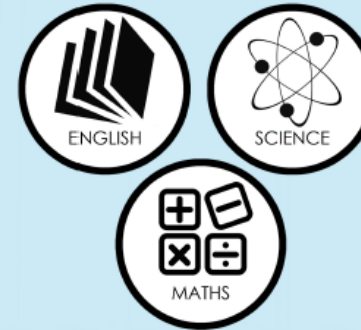


—Home Learning Programme—

Years 9,10 and 11

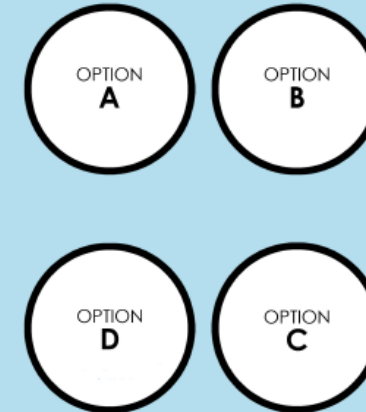
CORE SUBJECTS

2 hour subject specific and
30 minutes Independent Learning
[KITE booklets and wider revision]



OPTION SUBJECTS

1 hour subject specific and
30 minutes Independent Learning
[KITE booklets and wider revision]



Expectations for the completion of Home Learning :

Students should ensure that they take responsibility for the following:

- Recording details of Home Learning appropriately and as directed by the teacher
- Accessing E-Praise notifications and using E-Praise to manage Home Learning
- Making time to complete Home Learning
- Creating and following a Home Learning schedule to establish a weekly routine
- Completing all Home Learning to a high standard within the time frame given
- Catching up with Home Learning if missed during absence
- Seeking additional guidance and support with Home Learning where necessary
- Adhering to sanctions issued if Home Learning is not completed without good reason

Opportunity

Endeavour

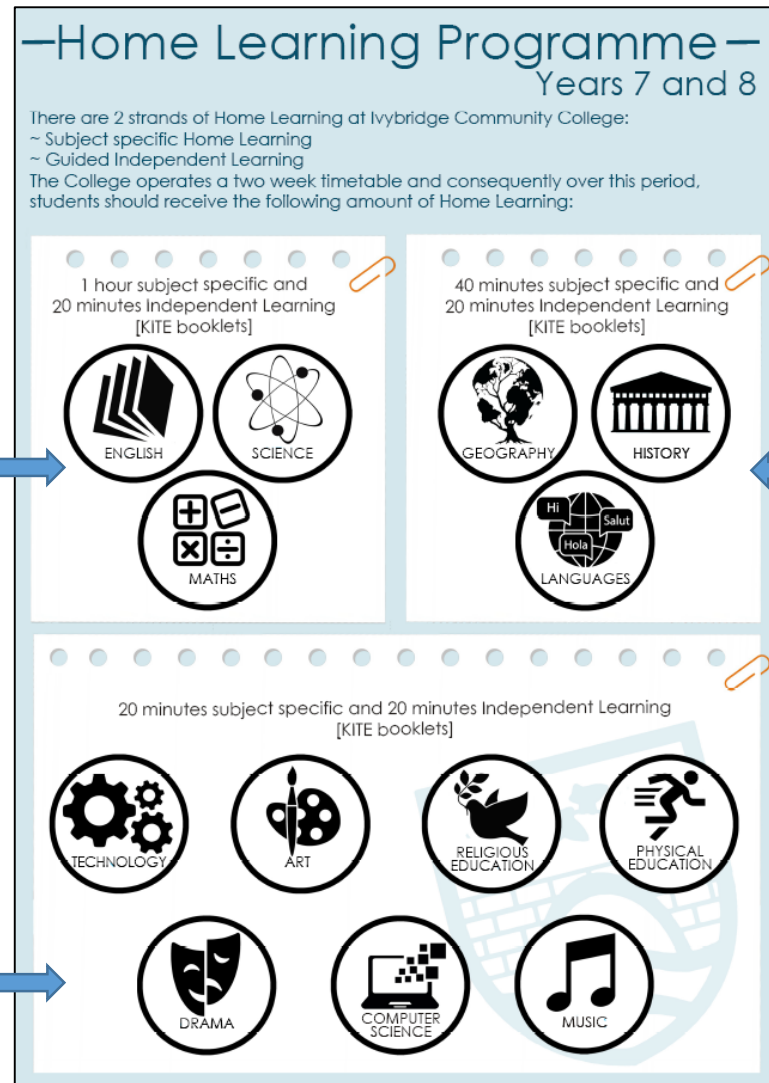
Excellence

Achievement

Home Learning Programme: Years 7 and 8

One hour
of Home Learning
per subject and
twenty minutes
Independent
Learning every
two weeks

Twenty minutes of
Home Learning
per subject and
Twenty minutes
Independent
Learning every
two weeks



Forty minutes
of Home Learning
per subject and
twenty minutes
Independent
Learning every two
weeks

Opportunity

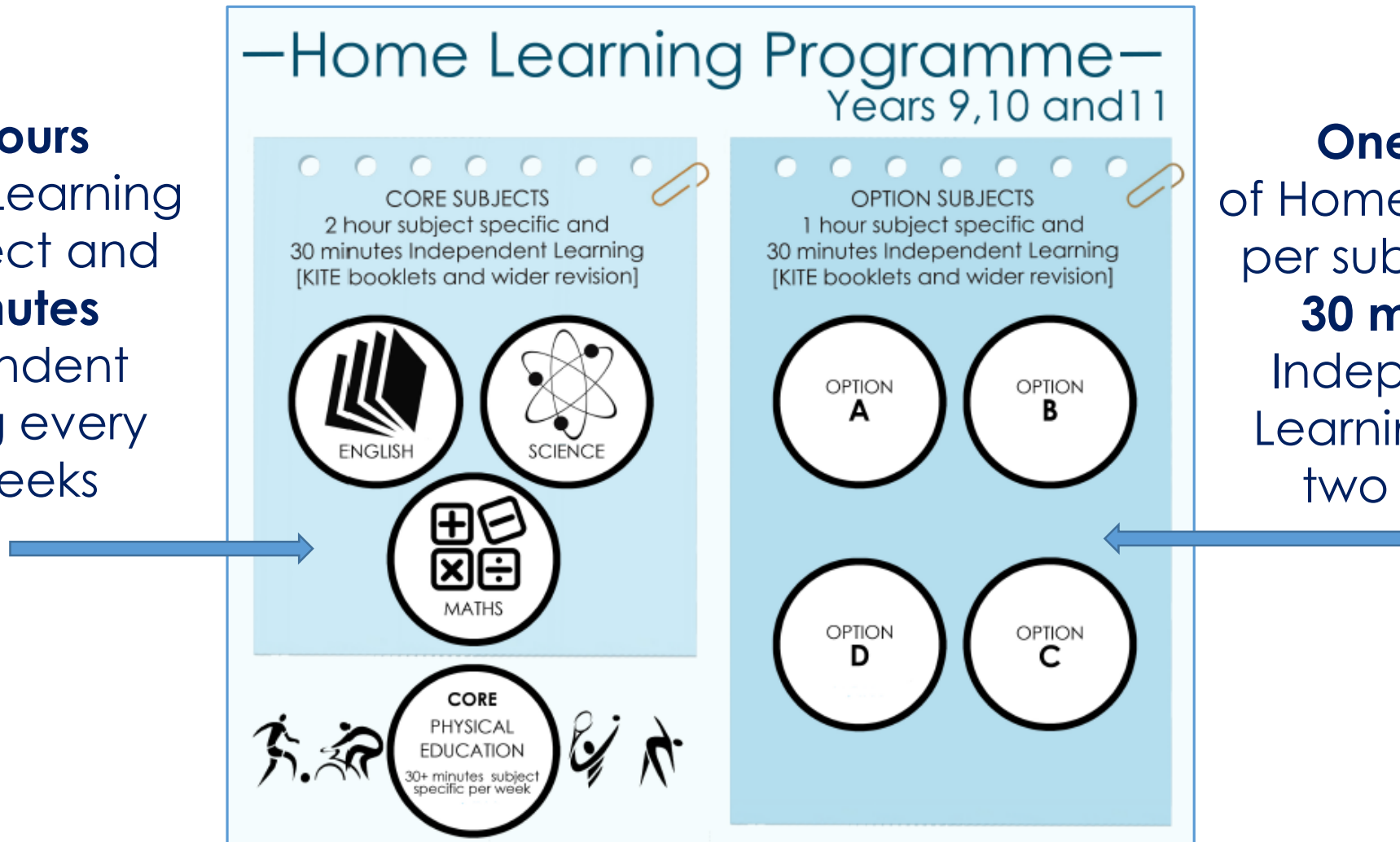
Endeavour

Excellence

Achievement

Home Learning Programme: Years 9,10 and 11

Two hours
of Home Learning
per subject and
30 minutes
Independent
Learning every
two weeks



One hour
of Home Learning
per subject and
30 minutes
Independent
Learning every
two weeks

Try and do **at least 30 minutes of physical activity** outside of College each week

Opportunity

Endeavour

Excellence

Achievement

Home Learning: Student expectations

Expectations for the completion of Home Learning :

Students should ensure that they take responsibility for the following:

- Recording details of Home Learning appropriately and as directed by the teacher
- Accessing E-Praise notifications and using E-Praise to manage Home Learning
- Making time to complete Home Learning
- Creating and following a Home Learning schedule to establish a weekly routine
- Completing all Home Learning to a high standard within the time frame given
- Catching up with Home Learning if missed during absence
- Seeking additional guidance and support with Home Learning where necessary
- Adhering to sanctions issued if Home Learning is not completed without good reason

Producing a Home Learning Schedule

It is a good idea to plan a weekly Home Learning schedule around your timetable and commitments outside of College, to help you establish a Home Learning routine.

When producing your Home Learning Schedule think about:

- When you have lessons in each subject
- When your subject teachers are planning to set and take in your subject specific Home Learning
- The days you are busy at lunchtime, after College or in the evening (you may not be able to do as much Home Learning on these days)
- The days you have more free-time (you may be able to do more Home Learning on these days)
- When you have access to suitable space and resources to complete your Home Learning



Personal Home Learning Schedule

WEEK A	MONDAY	TUESDAY	WEDNESDAY	THURSDAY	FRIDAY	SATURDAY	SUNDAY
Independent Learning (KITE booklets)							
Subject specific Home Learning							
Other activities							
WEEK B	MONDAY	TUESDAY	WEDNESDAY	THURSDAY	FRIDAY	SATURDAY	SUNDAY
Independent Learning (KITE booklets)							
Subject specific Home Learning							
Other activities							

Opportunity

Endeavour

Excellence

Achievement

Home Learning Schedule

An example Home Learning schedule for a student in Years 7 or 8 with specific days identified to complete Home Learning in each subject and regular time for KITE tasks and independent learning.

Year 7 and 8 Example Home Learning Schedule

Day	Mon A	Tue A	Wed A	Thur A	Fri A	Sat/Sun
Guided Independent Learning	English and Maths 2x10mins	Science, IT and DT 3x10mins	History and Geog. 2x10mins	RS and MFL 2x10mins	Art, Music and Drama 3x10mins	PE Review Qs from the weekly KITE test
Subject Specific HL	Complete subject specific home learning on the day set.					Complete any HL not done during the week
Other Activities		Music lesson		Rugby training		
Day	Mon B	Tue B	Wed B	Thur B	Fr B	Sat/Sun
Guided Independent Learning	English and Maths 2x10mins	Science, IT and DT 3x10mins	History and Geog. 2x10mins	RS and MFL 2x10mins	Art, Music and Drama 3x10mins	PE Review Qs from the weekly KITE test
Subject Specific HL	Complete subject specific home learning on the day set.					Complete any HL not done during the week
Other Activities		Music Lesson		Rugby training		

Opportunity

Endeavour

Excellence

Achievement

Home Learning Schedule

An example Home Learning schedule for a student in Years 9, 10 or 11 with specific days identified to complete Home Learning in each subject and regular time for KITE tasks and independent learning.

Example Home Learning Schedule for Years 9, 10 and 11

Day	Mon A	Tue A	Wed A	Thur A	Fri A	Sat/Sun
Guided Independent Learning	English 15 mins	Maths 15 mins	Science 15 mins	Option D 15mins	Review Qs from the weekly KITE test	Core PE (Physical Activity)
	Option A 15 mins	Option B 15 mins	Option C 15 mins	N/A		Complete any HL not done during the week
Subject Specific HL	Complete Subject Specific Home Learning on the day set.					
Other Activities	Football Training			Dance Academy		
Day	Mon B	Tue B	Wed B	Thur B	Fr B	Sat/Sun
Guided Independent Learning	English 15 mins	Maths 15 mins	Science 15 mins	Option D 15mins	Review Qs from the weekly KITE test	Core PE (Physical Activity)
	Option A 15 mins	Option B 15 mins	Option C 15 mins	N/A		Complete any HL not done during the week
Subject Specific HL	Complete Subject Specific Home Learning on the day set.					
Other Activities	Football Training			Dance Academy		

Opportunity

Endeavour

Excellence

Achievement

Recording Home Learning

Home Learning will be set by your teachers in lessons and will also be communicated to students (and parents) using epraise.



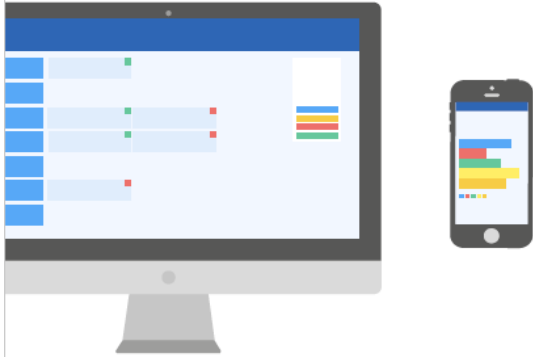
Students are expected to:

- Record any additional information about Home Learning in your KITE Learning Journal notes pages or subject exercise books
- Check epraise daily for Home Learning updates (using the planner or notification sections)
- Use epraise to record when Home Learning has been completed by clicking the 'done' tab next to the classnote on epraise.

Using epraise for Home Learning

ABOUT US

We're an online rewards and homework system based in the UK, working with schools around the world. Our system keeps track of all the great things that you do in and out of school to help recognise and celebrate your achievements.



GETTING STARTED...

Schools can log in to epraise in a variety of different ways. Your school will tell you how you can access your profile on epraise and give you a username and password.

1. Go to epraise.co.uk and click *Login*.
2. Search for your school on the list.
3. Make sure you're on the *Students* tab (if there is one).
4. Enter your username and password and hit *Login*.

FORGOTTEN PASSWORD

If you forget your password you will need to speak to a teacher at your school to get it reset.

CHANGE PASSWORD

Depending on your settings you may be able to change your password under *Me > Change Password*.

FEATURES

Epraise has loads of different features which your school can choose to use. They may not use all of them so don't worry if you can't see some of the things below.

THE DASHBOARD

Once you've logged in, the first page you'll see is the dashboard. This is an overview of everything that is going on around your school.

ME

Under the *Me* tab you can find your *Profile*. This is where you can see all the points you've been awarded and any digital badges you've achieved. You might also be able to see any grades or homework notes that have been shared with you too.

HOMEWORK ADD-ON

If your school has purchased the homework add-on you'll be able to see an option called *Planner* under the *Me* tab. You'll be able to view homework, mark it as completed and see any grades that have been given.

epraise.co.uk
The award winning school reward system

You can log into epraise from the quick links on the College website, or directly through the epraise website www.epraise.co.uk using your normal College username and password

You can also download the epraise app for apple and android phones.

There is also a parent app which parents can use to find out what Home Learning you have been set as well as any praise points, demerits, or sanctions you have received.



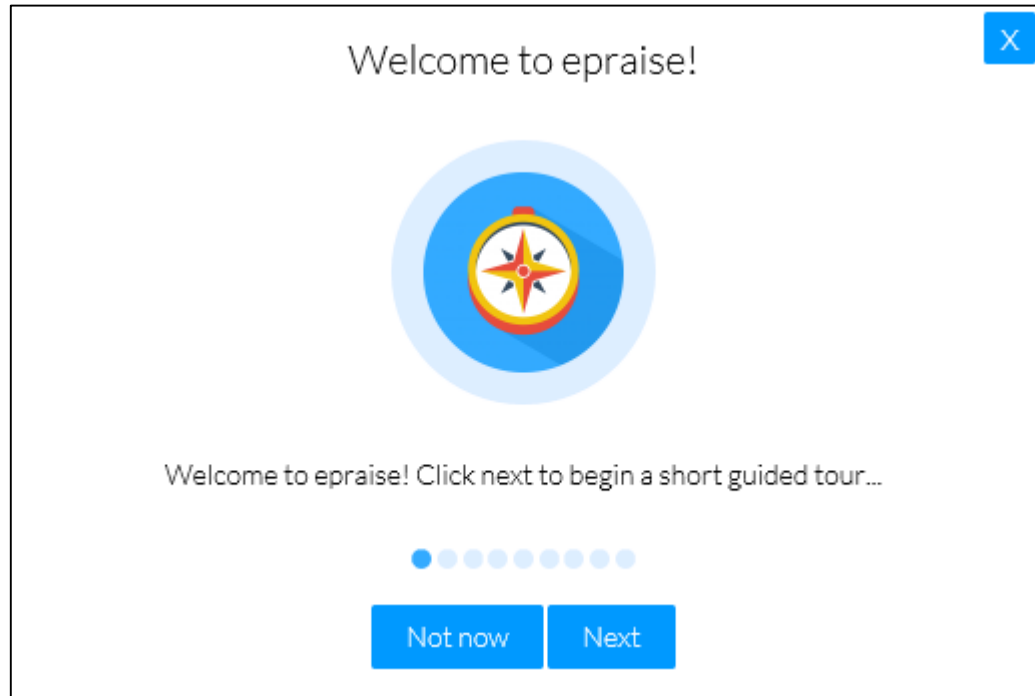
Opportunity

Endeavour

Excellence

Achievement

Using epraise for the first time



When you first log in to epraise you will see a welcome screen that lets you navigate through a tour of epraise.

This can be reset through the guides and tutorials section from the downloads tab at any time.

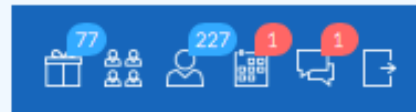
Using epraise for Home Learning

Student's view



Students will have access to their own Planner by going to Me > Planner.

The diary layout makes it really easy for students to see when their homework has been set and when it is due in. If they have homework due within the next 5 days there will be a red circle to indicate this by the planner icon in the top right hand side of the screen.



The epraise dashboard at the top right of your screen has quick links to the different epraise functions.

A red bubble on the calendar symbol means you have Home Learning due in the next 5 days.

The diary opens up showing the homework that is due, with options to look at 'Set only' or 'Due and Set' on the right hand side. There is also a handy key to indicate whether the homework has either been Set, Due, Overdue or Completed.

You can choose to view your Home Learning tasks in a calendar view or as a list. A new function lets you search by subject or topic to filter the Home Learning information.

Planner

Weekly Due

Show

By due date

By set date

Both due & set

Key

Set

Due

Overdue

Completed

Not homework

↑						
Sunday 12th August						
Monday 13th August	Art Please bring an old shirt for work today.					
Tuesday 14th August	English Read chapters 10-16					
Wednesday 15th August	German Memorise the list of translation in prep for next	Religious Ed Plesse go onto BBC bhesize and finish watching those				
Thursday 16th August	7A Don't forget your consent forms for the year 7 school					
Friday 17th August	English Using empathy as a theme, write up an analysis of each	Religious Ed Going into the village to have a look at the old church and	Science Finish off your written experiment. Don't forget to			
Saturday 18th August						
↓						

epraise

Opportunity

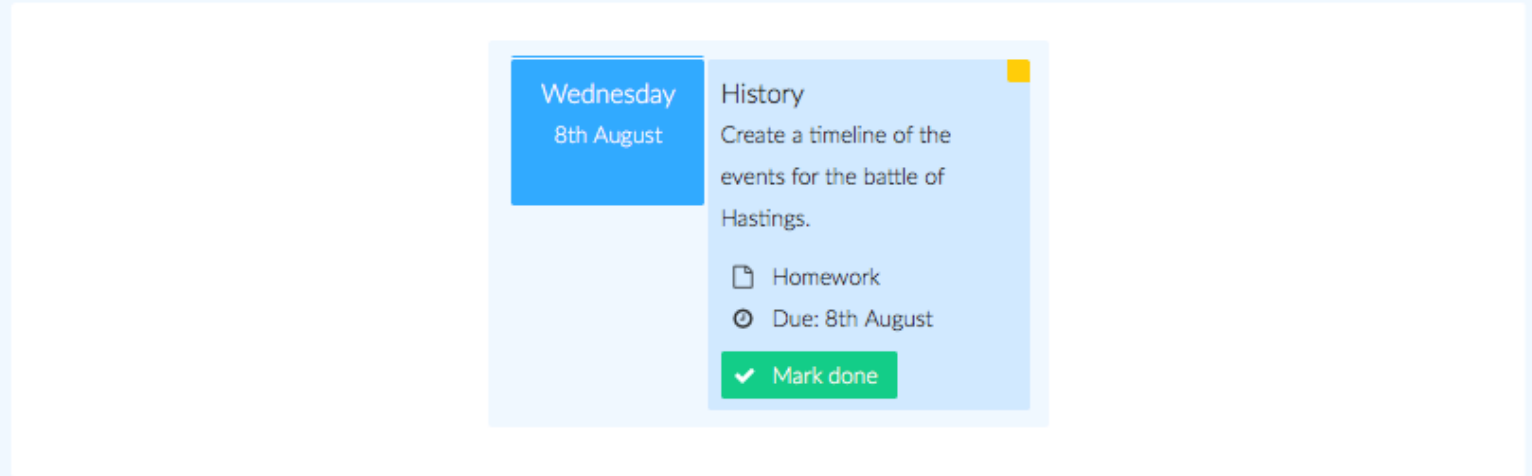
Endeavour

Excellence

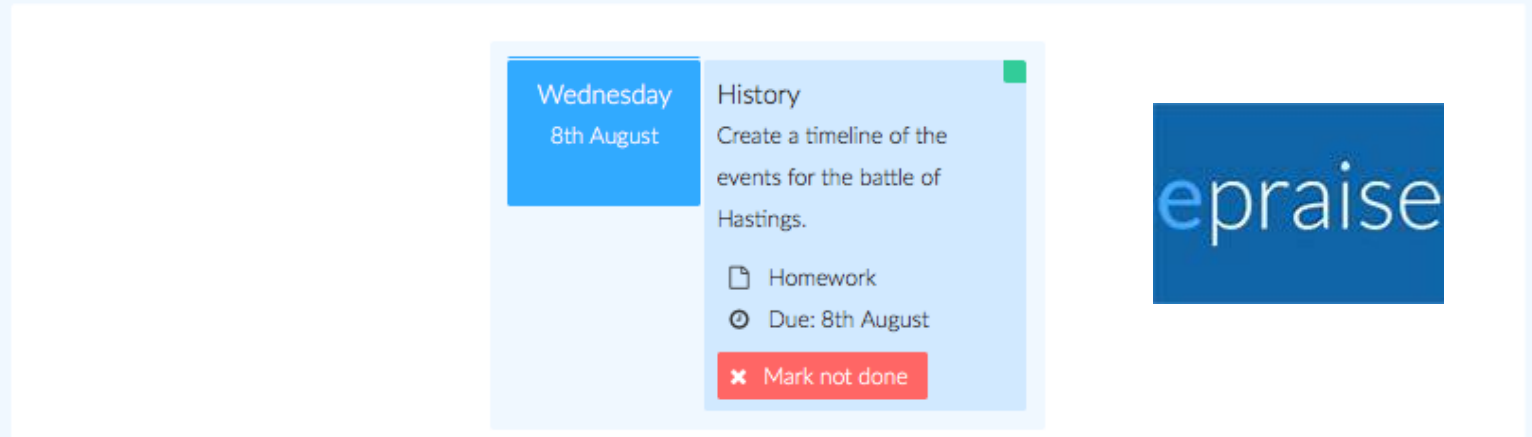
Achievement

When you have completed a Home Learning task you need to click on the green 'Mark done' button. This helps you to organise your work and also tells your teachers that you have done the work. You must make sure that you hand in your Home Learning by the due date, marking the work as 'done' does not count as handing it in!

Students can click on the homework note to view the homework details and download any attachments by clicking the blue cloud icon. They can mark the homework as complete by clicking on the green Mark done button. This will update the homework in the diary view to show as Completed with a green icon.



If they accidentally mark homework as completed, they can quickly undo this by opening the homework and clicking the red Mark not done button.



Opportunity

Endeavour

Excellence

Achievement

Additional epraise guidance

The screenshot shows the epraise website interface. The top navigation bar is blue with the 'epraise' logo and links for Home, Me, Groups, Community, Overviews, Downloads (highlighted with a red box), and Admin. To the right of the navigation bar are icons for search, groups, user profile, calendar, chat, and a share icon. Below the navigation bar, the 'Downloads' section is titled 'Guides and tutorials' (highlighted with a red box). Under this title, there are two sections: 'Online guides' and 'Welcome screen tutorials'. The 'Online guides' section contains four cards: 'Student guide' (For all students, highlighted with a red box), 'Parent guide' (For all parents), 'Staff guide' (For classroom teachers), and 'Covid-19 Attendance' (Recording and reporting). The 'Welcome screen tutorials' section contains one card: 'Reset tutorials' (See the welcome screen again). A red arrow points from the 'Downloads' tab to the 'Guides and tutorials' section. Another red arrow points from the 'Student guide' card to a 'Contents' box. The 'Contents' box is a red-bordered rectangle containing a list of links arranged in two columns. The left column includes: Introduction, Getting help, Supported systems, Logging in, Tutorials & quicklinks, Dashboard, Profile, Bio, and Point codes. The right column includes: Messenger, Planner, Get involved, Parents' evenings, House points, Charitable causes, Shop, and Prize draws.

There is additional guidance on the epraise website which you can access through the downloads tab. You can also reset the welcome tutorial which takes you through a step-by-step guide of how to use epraise.

Contents	
Introduction	Messenger
Getting help	Planner
Supported systems	Get involved
Logging in	Parents' evenings
Tutorials & quicklinks	House points
Dashboard	Charitable causes
Profile	Shop
Bio	Prize draws
Point codes	

Opportunity

Endeavour

Excellence

Achievement

Home Learning Sanctions

You should make every effort to complete and hand in your Home Learning on time. If you forget to hand in your Home Learning the following scaled response and sanctions will be applied:

First Home Learning not complete: Verbal warning given

Still incomplete/ Second Home Learning not complete: Teacher phone call home and logged on epraise

Still incomplete/persistent lack of Home Learning: Head of Department phone call home and EACD

Opportunity

Endeavour

Excellence

Achievement