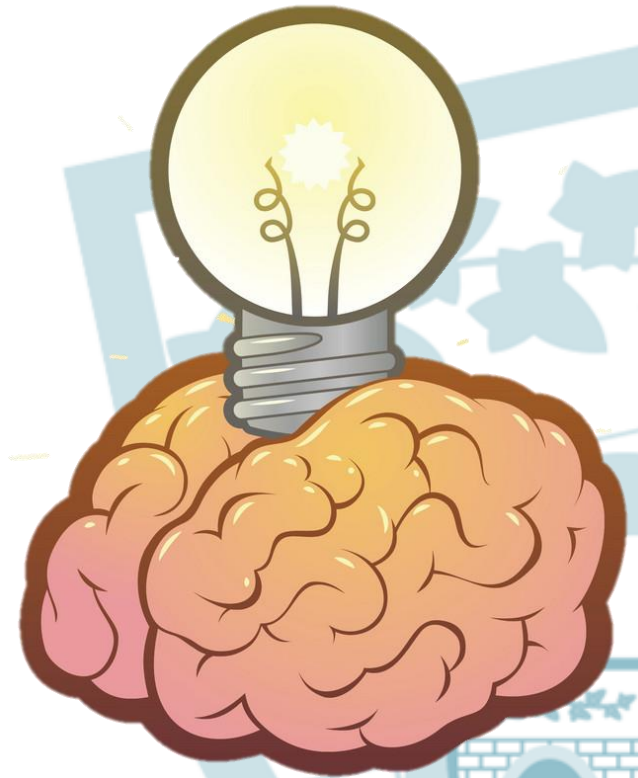


# What Are Thinking and Learning?

- ‘**Cognition**’ refers to ‘**thinking**’.
- Understanding the processes of cognition is important in order to help us understanding how to help our children learn and revise successfully.



# What is Growth Mindset?



- Educational researchers have studied the importance of children's attitudes towards failure.

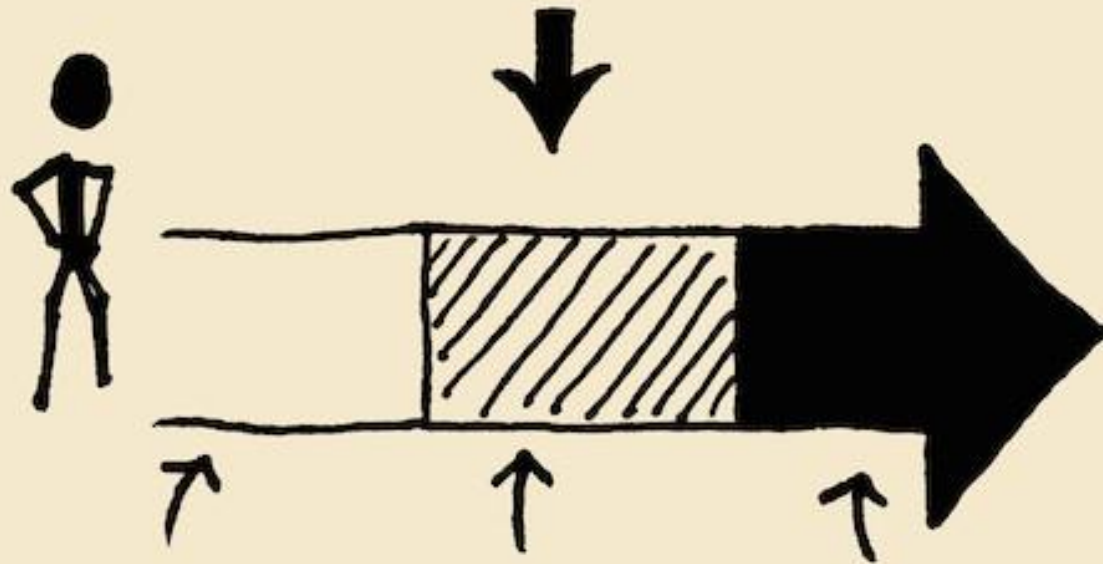
Some children rebound from failures whereas others are devastated by setbacks.

It is important to teach children resilience, so they can rebound from setbacks and respond with confidence to new learning challenges.

# What is the Zone of Proximal Development?

- Educational research suggests that social interaction is very important in learning (Vygotsky).
- For learning to take place, there must be three conditions:
  - **Social Interaction** – *Supporting your child through discussions and questions about what they are learning.*
  - **More Knowledgeable Other** – *Allowing children to speak to an adult about their learning, you can support them by asking them to explain their learning to you.*
  - **Zone of Proximal Development** – *This is the space you create when you support your child with learning at home – your child will learn more effectively with your help and support!*

# VISUALIZING THE ZONE OF PROXIMAL DEVELOPMENT



THINGS YOU CAN  
DO ALL ON  
YOUR OWN

THINGS YOU  
CAN DO WITH A  
BIT OF HELP

THINGS YOU CAN'T  
YET DO, NO MATTER  
HOW MUCH SUPPORT  
YOU GET